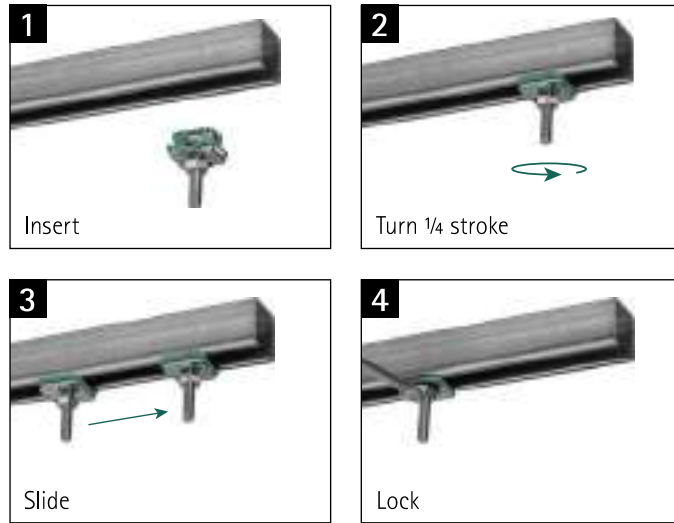


## BIS RapidStrut® Info Page



The BIS RapidStrut® system consists of various rail profiles and an extensive range of accessories, such as slide nuts, T-bolt assemblies, ball swivel hangers and various rail connectors.

### Insert, lock, done!

The accessories are pre-assembled and delivered 'ready-to-use' to the building site. The plastic spring allows the slide nut to be fixed into the rail easily. BIS RapidStrut® is so easy to use, that it is possible to save up to 40% in fixing time!

### Your benefits:

- for all middle heavy and heavy rail applications
- accessories pre-assembled 'ready-to-use'
- quick and easy fixing to the rail
- accessories suitable for all Strut profiles
- saves up to 40% fixing time!

### A fitting rail, for each application

The BIS RapidStrut® system offers an unprecedented choice for rail profiles and cantilever arms.

- all common Strut profiles (length 2 or 6 mtr.)
- Cantilever arms (various lengths)
- Rail-wall plate



### Extensive range of accessories

BIS RapidStrut® offers accessories for:

#### ■ Pipe fixing

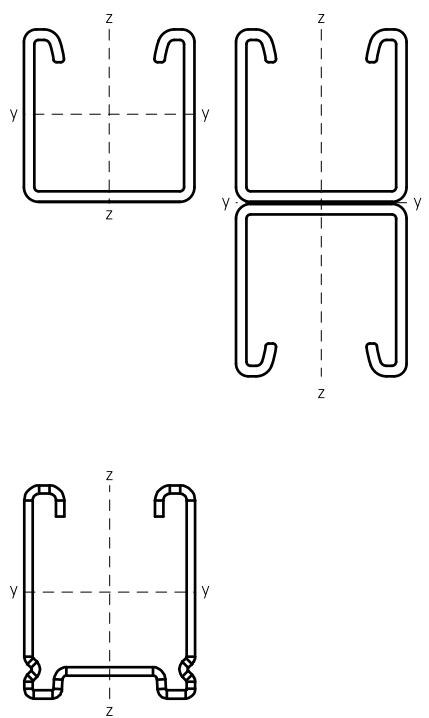


#### ■ Rail connection



# Technical Details BIS RapidStrut® Rail

System BIS RapidStrut® - Table of rail section properties



| Type               | Weight (kg / m) | Moment of inertia cm <sup>4</sup> |                | Section modulus cm <sup>3</sup> |                |
|--------------------|-----------------|-----------------------------------|----------------|---------------------------------|----------------|
|                    |                 | I <sub>y</sub>                    | I <sub>z</sub> | W <sub>y</sub>                  | W <sub>z</sub> |
| 41x21 - 1,5        | 1,15            | 0,78                              | 3,70           | 0,72                            | 1,80           |
| 41x41 - 1,5        | 1,65            | 4,46                              | 6,20           | 2,12                            | 3,00           |
| 41x41 - 2,0        | 2,35            | 5,34                              | 7,79           | 2,56                            | 3,77           |
| 41x21 - 2,5        | 1,78            | 1,01                              | 5,40           | 0,93                            | 2,61           |
| 41x41 - 2,5        | 2,45            | 6,26                              | 9,30           | 2,97                            | 4,50           |
| 41x62 - 2,5        | 3,33            | 18,03                             | 13,20          | 5,75                            | 6,39           |
| 41x82 - 2,5        | 4,08            | 37,31                             | 16,89          | 9,00                            | 8,18           |
| 41x51 - 2,0 (DS 5) | 2,62            | 8,81                              | 9,49           | 3,44                            | 4,60           |
| 41x21D - 2,5*      | 3,68            | 5,70                              | 10,76          | 2,77                            | 5,21           |
| 41x41D - 2,5*      | 5,24            | 36,79                             | 18,56          | 8,91                            | 8,99           |
| 41x62D - 2,5*      | 6,90            | 111,21                            | 26,37          | 17,94                           | 12,77          |
| 41x82D - 2,5*      | 8,46            | 240,93                            | 33,90          | 29,38                           | 16,42          |

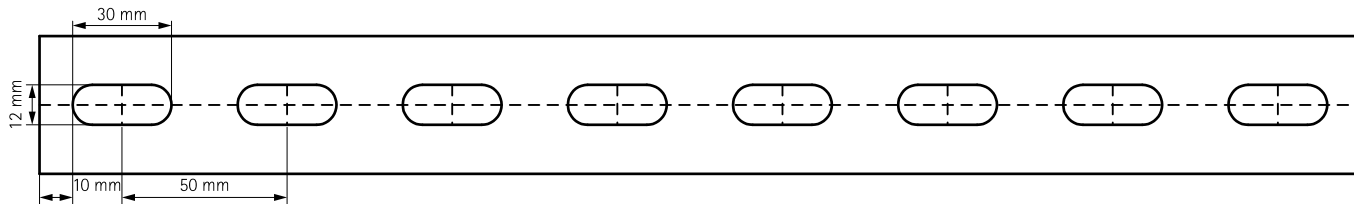
\* non-perforated

The values of fixing rail in stainless steel are higher than those mentioned above. See Rail load tables for safe working loads.

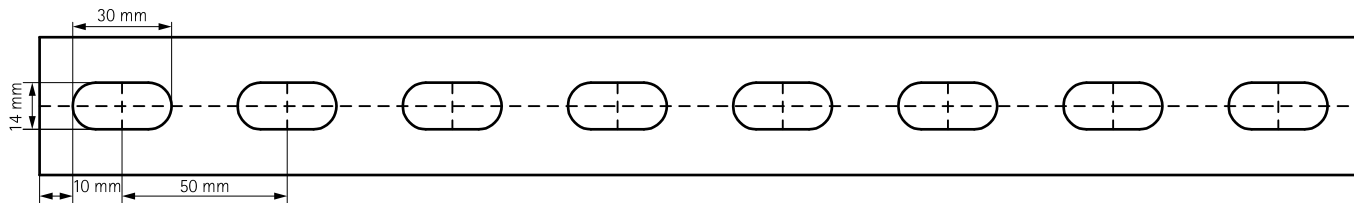
## Perforation pattern for fixing to ceiling or wall.

Distance between rail end and first hole is always equal.

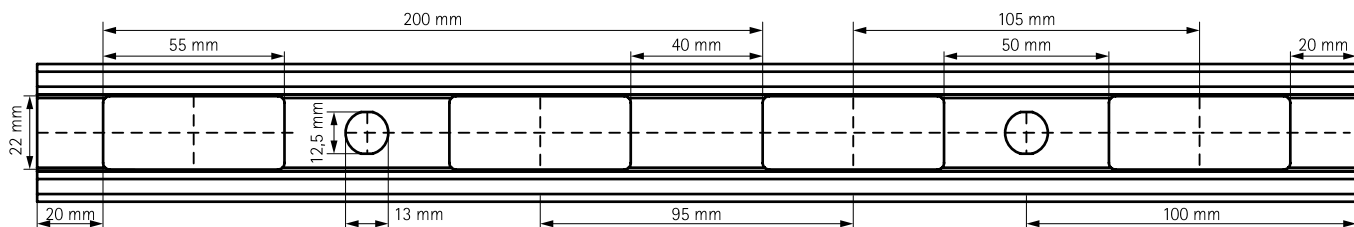
### BIS RapidStrut® - 1,5 mm



### BIS RapidStrut® - 2,0 / 2,5 mm



### BIS RapidStrut® DS 5 - 2,0 mm



Subject to modifications

## Applications

Air Conditioning equipment support



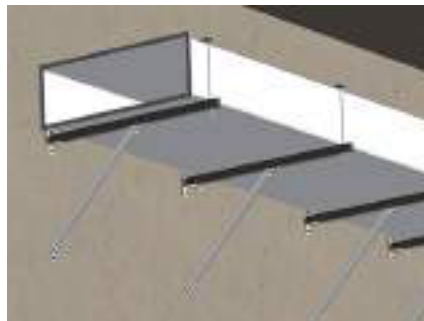
*Hot dipped Galvanized and stainless steel available that is highly protected against corrosion.*

Pipe support with expansion movement capability



*Complete pipe rings offer to be used in most of mechanical applications.*

Air Conditioning and ventilation supports



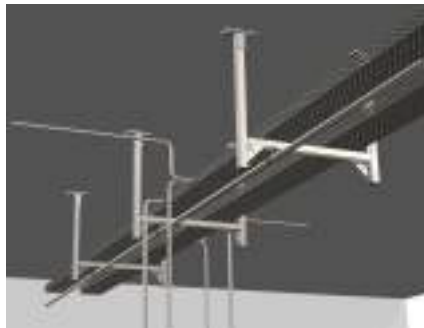
*System specially developed for ventilation and AC applications.*

Mechanical and electrical supports in mechanical room



*Modular design reduces the need for detailed planning work. High strength and stability.*

Electrical cable tray supports



*Can be quickly modified or adapted to accommodate changing site situations.*



# BIS RapidStrut® Fixing Rail DS 5 (BUP1000)

suspension and support

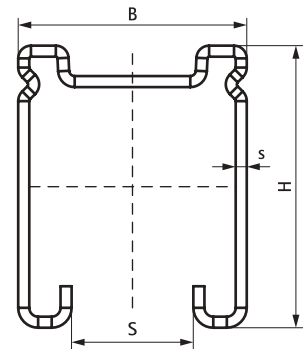


### Features and benefits

- for a quick and easy fixing
- unique hole pattern, allowing BIS RapidStrut® Accessories to be mounted on both sides of the rail
- very high corrosion resistance (BIS UltraProtect® 1000)
- corrosion protection remains intact after cutting
- strength minimal equal to Strut 41x41x2.5 mm
- with continuous perforation
- distance between rail end and first hole is always equal
- a continuous graduated centimetre scale on one side
- material: steel 1.0242
- surface protection:
  - product is part of the BIS UltraProtect® 1000 system
  - suitable for in- and outdoor applications
  - stands min. 1,000 hours salt spray test (max. 5% red rust) according to ISO 9227

| Part No.   | L   | B    | H    | s    | S    | BndS | BndL | App. |
|------------|-----|------|------|------|------|------|------|------|
|            |     | (mm) | (mm) | (mm) | (mm) |      |      |      |
| 6505 8 252 | 2 m | 41   | 51   | 2.0  | 22   | 20   | 80   | m.   |
| 6505 8 352 | 3 m | 41   | 51   | 2.0  | 22   | 30   | 120  | m.   |
| 6505 8 652 | 6 m | 41   | 51   | 2.0  | 22   | 60   | 240  | m.   |

For more information about the max. allowed load (Fa,z) please refer to the loading tables or our online datasheet 'Technical Details BIS RapidStrut®'.

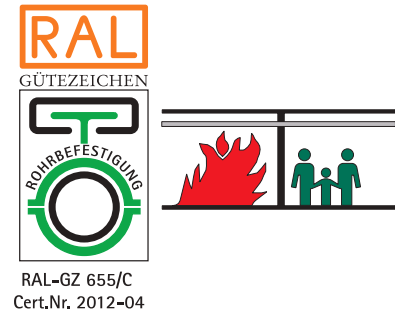


Subject to modifications



# BIS RapidStrut® Fixing Rail (pg)

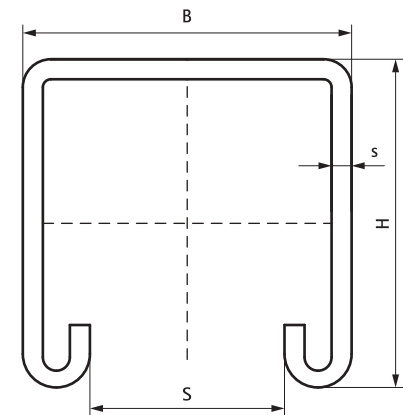
suspension and support



## Features and benefits

- universal rail system
- with continuous perforation (on request without perforation)
- distance between rail end and first hole is always equal
- a continuous graduated centimetre scale on one side
- with inward formed flanges with serrated profile for extra grip
- material: steel 1.0242
- Part No. 650 5 X85 (Strut 2.5 mm) material: steel 1.0332
- yield strength 240 N/mm<sup>2</sup>
- pre-galvanized
- tested for fire safety

| Part No.  | Model          | L   | B    | H    | s    | S    | RAL              | BndS | BndL | App. |
|-----------|----------------|-----|------|------|------|------|------------------|------|------|------|
|           |                | (m) | (mm) | (mm) | (mm) | (mm) |                  |      |      |      |
| 650 5 222 | Perforated     | 2 m | 41   | 21   | 2.00 | 22   | RAL <sup>1</sup> | 20   | 200  | m.   |
| 650 5 322 | Perforated     | 3 m | 41   | 21   | 2.00 | 22   | RAL <sup>1</sup> | 30   | 300  | m.   |
| 650 5 622 | Perforated     | 6 m | 41   | 21   | 2.00 | 22   | RAL <sup>1</sup> | 60   | 600  | m.   |
| 650 5 225 | Perforated     | 2 m | 41   | 21   | 2.50 | 22   | RAL <sup>1</sup> | 20   | 200  | m.   |
| 650 5 325 | Perforated     | 3 m | 41   | 21   | 2.50 | 22   | RAL <sup>1</sup> | 30   | 300  | m.   |
| 650 5 625 | Perforated     | 6 m | 41   | 21   | 2.50 | 22   | RAL <sup>1</sup> | 60   | 600  | m.   |
| 650 5 242 | Perforated     | 2 m | 41   | 41   | 2.00 | 22   | RAL <sup>1</sup> | 20   | 100  | m.   |
| 650 5 342 | Perforated     | 3 m | 41   | 41   | 2.00 | 22   | RAL <sup>1</sup> | 30   | 150  | m.   |
| 650 5 642 | Perforated     | 6 m | 41   | 41   | 2.00 | 22   | RAL <sup>1</sup> | 60   | 300  | m.   |
| 650 5 245 | Perforated     | 2 m | 41   | 41   | 2.50 | 22   | RAL <sup>1</sup> | 20   | 100  | m.   |
| 650 5 345 | Perforated     | 3 m | 41   | 41   | 2.50 | 22   | RAL <sup>1</sup> | 30   | 150  | m.   |
| 650 5 645 | Perforated     | 6 m | 41   | 41   | 2.50 | 22   | RAL <sup>1</sup> | 60   | 300  | m.   |
| 650 5 365 | Perforated     | 3 m | 41   | 62   | 2.50 | 22   | -                | 30   | 90   | m.   |
| 650 5 665 | Perforated     | 6 m | 41   | 62   | 2.50 | 22   | -                | 60   | 180  | m.   |
| 650 5 385 | Perforated     | 3 m | 41   | 82   | 2.50 | 22   | -                | 30   | -    | m.   |
| 650 5 685 | Perforated     | 6 m | 41   | 82   | 2.50 | 22   | -                | 60   | 180  | m.   |
| 650 5 620 | Not perforated | 6 m | 41   | 21   | 2.50 | 22   | -                | 60   | 600  | m.   |
| 650 5 640 | Not perforated | 6 m | 41   | 41   | 2.50 | 22   | -                | 60   | 300  | m.   |



RAL<sup>1</sup> = tested, certified and externally monitored according to RAL-GZ 655/C.  
Strut 41x41x2.5 and above tested for fire safety.

For detailed technical information about our RAL marked products, please see the RAL datasheet in our webcatalogue: [www.walraven.com/gb/en/catalogue/](http://www.walraven.com/gb/en/catalogue/).

For more information about the max. allowed load (Fa,z) please refer to the loading tables or our online datasheet 'Technical Details BIS RapidStrut®'.

Subject to modifications

# Support Channel

suspension and support

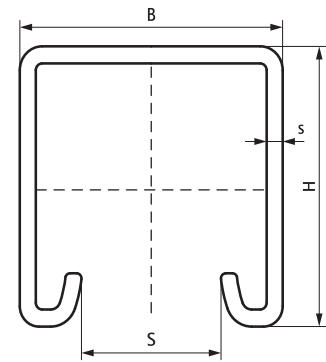


### Features and benefits

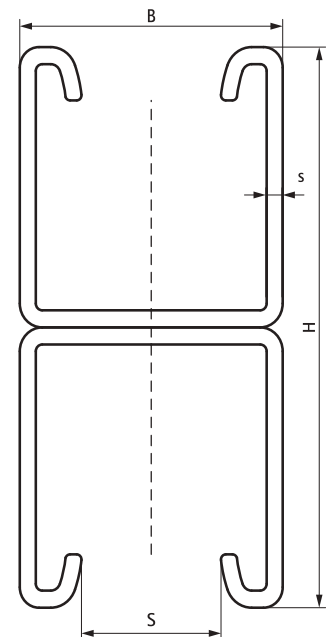
- universal rail system
- for a quick and easy fixing
- material: steel
- pre-galvanized
- loading tables available for more information about the max. allowed load (Fa,z)

| Part No.      | L   | B    | H         | s    | S    | App. |
|---------------|-----|------|-----------|------|------|------|
|               |     | (mm) | (mm)      | (mm) | (mm) |      |
| DM C551 4 121 | 3 m | 41   | 21        | 1.5  | 22   | m.   |
| DM C551 4 141 | 3 m | 41   | 41        | 1.5  | 22   | m.   |
| DM C552 4 121 | 3 m | 41   | 21        | 2.0  | 22   | m.   |
| DM C552 4 141 | 3 m | 41   | 41        | 2.0  | 22   | m.   |
| DM C553 4 121 | 3 m | 41   | 21        | 2.5  | 22   | m.   |
| DM C553 4 141 | 3 m | 41   | 41        | 2.5  | 22   | m.   |
| DMC5514121D   | 3 m | 41   | 42 (21x2) | 1.5  | 22   | m.   |
| DMC5514141D   | 3 m | 41   | 82 (41x2) | 1.5  | 22   | m.   |
| DMC5524121D   | 3 m | 41   | 42 (21x2) | 2.0  | 22   | m.   |
| DMC5524141D   | 3 m | 41   | 82 (41x2) | 2.0  | 22   | m.   |
| DMC5534121D   | 3 m | 41   | 42 (21x2) | 2.5  | 22   | m.   |
| DMC5534141D   | 3 m | 41   | 82 (42x2) | 2.5  | 22   | m.   |

Hot Dip Galvanized and Electrogalvanized option available on request.  
 Custom sizes available on request.  
 Made in UAE.



DMC55XXXXX



DMC55XXXXXD

Subject to modifications

## BIS RapidStrut® Fixing Rail Double (pg)

suspension and support



### Features and benefits

- universal rail system
- with continuous perforation
- a continuous graduated centimetre scale on one side
- with inward formed flanges with serrated profile for extra grip
- material: steel 1.0332
- yield strength 240 N/mm<sup>2</sup>
- pre-galvanized
- tested for fire safety

| Part No.  | L   | B    | H            | s    | S    | BndS | BndL | App. |
|-----------|-----|------|--------------|------|------|------|------|------|
|           |     | (mm) | (mm)         | (mm) | (mm) |      |      |      |
| 650 5 626 | 6 m | 41   | 42 (21 x 2)  | 2,50 | 22   | 6    | 150  | m.   |
| 650 5 646 | 6 m | 41   | 82 (41 x 2)  | 2,50 | 22   | 6    | 300  | m.   |
| 650 5 666 | 6 m | 41   | 124 (62 x 2) | 2,50 | 22   | 6    | 90   | m.   |
| 650 5 686 | 6 m | 41   | 164 (82 x 2) | 2,50 | 22   | 6    | 180  | m.   |

Strut 41x2 and above tested for fire safety.

For more information about the max. allowed load (Fa,z) please refer to the loading tables or our online datasheet 'Technical Details BIS RapidStrut®'.



## BIS RapidStrut® Fixing Rail Double (hdg)

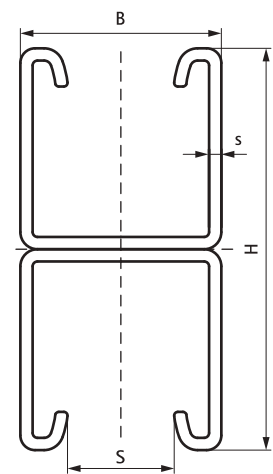
suspension and support



### Features and benefits

- universal rail system
- with continuous perforation
- a continuous graduated centimetre scale on one side
- with inward formed flanges with serrated profile for extra grip
- material: steel 1.0332
- yield strength 240 N/mm<sup>2</sup>
- hot dip galvanized
- tested for fire safety

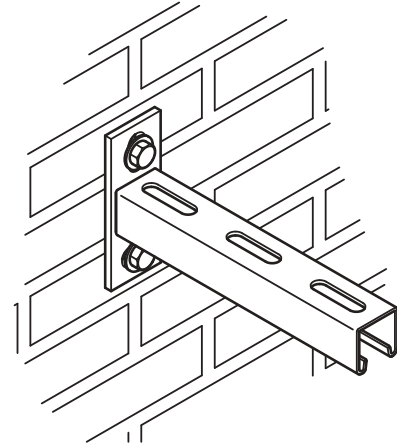
| Part No.  | L   | B    | H          | s    | S    | BndS | BndL | App. |
|-----------|-----|------|------------|------|------|------|------|------|
|           |     | (mm) | (mm)       | (mm) | (mm) |      |      |      |
| 650 1 626 | 6 m | 41   | 42 (21x2)  | 2,50 | 22   | 6    | 150  | m.   |
| 650 1 646 | 6 m | 41   | 82 (41x2)  | 2,50 | 22   | 6    | 150  | m.   |
| 650 1 666 | 6 m | 41   | 122 (61x2) | 2,50 | 22   | 60   | 90   | m.   |
| 650 1 686 | 6 m | 41   | 164 (82x2) | 2,50 | 22   | 6    | 90   | m.   |





# BIS RapidStrut® Cantilever Arms (BUP1000)

fixing to wall

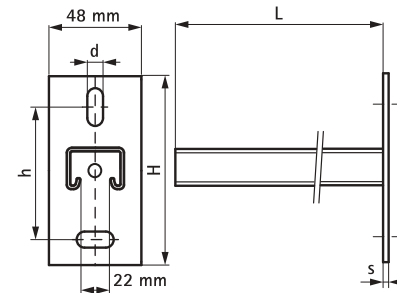


### Features and Benefits

- wall plate welded on Strut Profile
- slots at 90° to each other to simplify fixing
- CO<sub>2</sub> welded
- with inward formed flanges with serrated profile for extra grip
- material: steel 1.0226
- surface protection:
  - product is part of the BIS UltraProtect® 1000 system
  - suitable for in- and outdoor applications
  - stands min. 1,000 hours salt spray test (max. 5% red rust) according to ISO 9227
- tested for fire safety



| Part No.  | L        | H    | h    | s    | From Rail       | d1      | Pack 1 |
|-----------|----------|------|------|------|-----------------|---------|--------|
|           | (mm)     | (mm) | (mm) | (mm) |                 | (mm)    |        |
| 660 3 831 | 200 mm   | 110  | 70,0 | 5,0  | Strut 41x21x2.5 | 25 x 11 | 10     |
| 660 3 832 | 300 mm   | 110  | 70,0 | 5,0  | Strut 41x21x2.5 | 25 x 11 | 10     |
| 660 3 833 | 450 mm   | 110  | 70,0 | 5,0  | Strut 41x21x2.5 | 25 x 11 | 10     |
| 660 3 834 | 600 mm   | 110  | 70,0 | 5,0  | Strut 41x21x2.5 | 25 x 11 | 10     |
| 660 3 923 | 300 mm   | 130  | 87,5 | 7,0  | Strut 41x41x2.0 | 30 x 13 | 10     |
| 660 3 926 | 450 mm   | 130  | 87,5 | 7,0  | Strut 41x41x2.0 | 30 x 13 | 10     |
| 660 3 928 | 600 mm   | 130  | 87,5 | 7,0  | Strut 41x41x2.0 | 30 x 13 | 8      |
| 660 3 861 | 150 mm   | 130  | 87,5 | 7,0  | Strut 41x41x2.5 | 30 x 13 | 10     |
| 660 3 870 | 200 mm   | 130  | 87,5 | 7,0  | Strut 41x41x2.5 | 30 x 13 | 10     |
| 660 3 862 | 300 mm   | 130  | 87,5 | 7,0  | Strut 41x41x2.5 | 30 x 13 | 10     |
| 660 3 871 | 400 mm   | 130  | 87,5 | 7,0  | Strut 41x41x2.5 | 30 x 13 | 10     |
| 660 3 863 | 450 mm   | 130  | 87,5 | 7,0  | Strut 41x41x2.5 | 30 x 13 | 10     |
| 660 3 873 | 500 mm   | 130  | 87,5 | 7,0  | Strut 41x41x2.5 | 30 x 13 | 10     |
| 660 3 864 | 600 mm   | 130  | 87,5 | 7,0  | Strut 41x41x2.5 | 30 x 13 | 8      |
| 660 3 865 | 750 mm   | 130  | 87,5 | 7,0  | Strut 41x41x2.5 | 30 x 13 | 8      |
| 660 3 866 | 1.000 mm | 130  | 87,5 | 7,0  | Strut 41x41x2.5 | 30 x 13 | 1      |
| 660 3 867 | 1.200 mm | 130  | 87,5 | 7,0  | Strut 41x41x2.5 | 30 x 13 | 1      |



Strut 41x41x2,5 and above tested for fire safety.  
 For more information about the max. allowed load (Fa,z) please refer to the loading tables or our online datasheet "Technical Details BIS RapidStrut®".

Subject to modifications

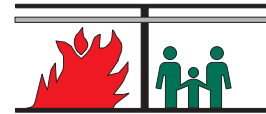
# BIS RapidStrut® Cantilever Arms 41x41D (BUP1000)

fixing to wall



## Features and Benefits

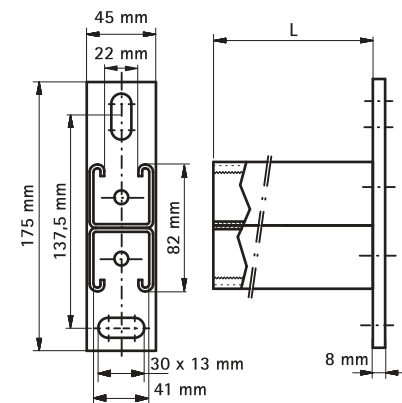
- wall plate welded on Strut Profile
- slots at 90° to each other to simplify fixing
- CO<sub>2</sub> welded
- with inward formed flanges with serrated profile for extra grip
- material: steel 1.0332
- surface protection:
  - product is part of the BIS UltraProtect® 1000 system
  - suitable for in- and outdoor applications
  - stands min. 1,000 hours salt spray test (max. 5% red rust) according to ISO 9227
  - tested for fire safety



| Part No.  | L        | From Rail        | Pack 1 |
|-----------|----------|------------------|--------|
| 660 3 883 | 450 mm   | Strut 41x41Dx2.5 | 8      |
| 660 3 884 | 600 mm   | Strut 41x41Dx2.5 | 4      |
| 660 3 885 | 750 mm   | Strut 41x41Dx2.5 | 4      |
| 660 3 886 | 1.000 mm | Strut 41x41Dx2.5 | 1      |

Strut 41x2 and above tested for fire safety.

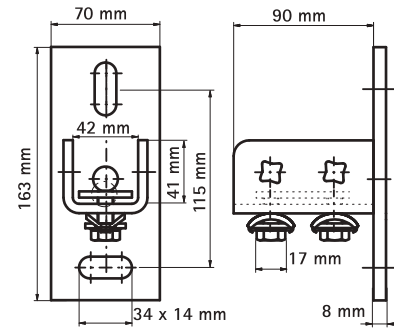
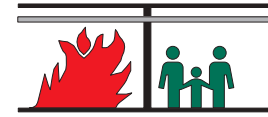
For more information about the max. allowed load (Fa,z) please refer to the loading tables or our online datasheet 'Technical Details BIS RapidStrut®'.





## BIS RapidStrut® Wall Plate (BUP1000)

fixing to wall



### Features and Benefits

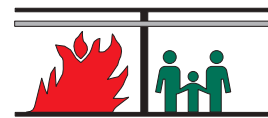
- U-profile welded on wall plate
- for wall fixing of rail
- rail can be fixed with slot downwards or sideways
- slots at 90° to each other to simplify fixing
- CO<sub>2</sub> welded
- with pre-assembled BIS RapidStrut® sliding nuts for a quick fixing and

retains assembly in place before final tightening

- material: metal parts made of steel 1.0332; spring(s) made of POM (polyoxymethylene), green
- surface protection:
  - product is part of the BIS UltraProtect® 1000 system

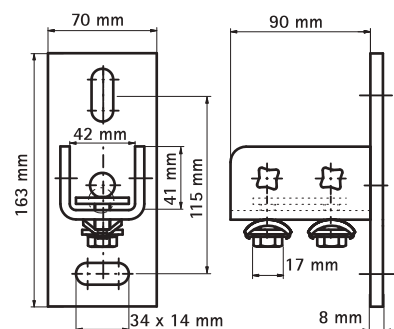
- suitable for in- and outdoor applications
- stands min. 1,000 hours salt spray test (max. 5% red rust) according to ISO 9227
- tested for fire safety

| Part No.   | For Rail | T (max.) (Nm) | Pack 1 |
|------------|----------|---------------|--------|
| 6668 3 400 | Strut    | 15.0          | 10     |



## BIS RapidStrut® Wall Plate (zp)

fixing to wall



### Features and Benefits

- U-profile welded on wall plate
- for wall fixing of rail
- rail can be fixed with slot downwards or sideways
- slots at 90° to each other to simplify fixing

- CO<sub>2</sub> welded
- with pre-assembled BIS RapidStrut® sliding nuts for a quick fixing and retains assembly in place before final tightening

- material: metal parts made of steel 1.0332; spring(s) made of POM (polyoxymethylene), green
- zinc plated
- tested for fire safety

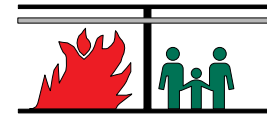
| Part No.   | For Rail | T (max.) (Nm) | Pack 1 |
|------------|----------|---------------|--------|
| 6667 3 400 | Strut    | 15.0          | 10     |

Subject to modifications



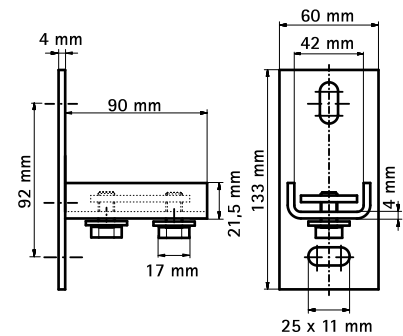
## BIS Strut Wall Plate

fixing to wall



### Features and Benefits

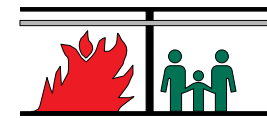
- U-profile welded on wall plate
- for wall fixing of rail
- slots at 90° to each other to simplify fixing
- with pre-assembled slide nuts
- material: steel 1.0332
- hot dip galvanized
- tested for fire safety



| Part No.   | For Rail | T (Nm) | Pack 1 |
|------------|----------|--------|--------|
| 6658 1 803 | Strut    | 15     | 10     |

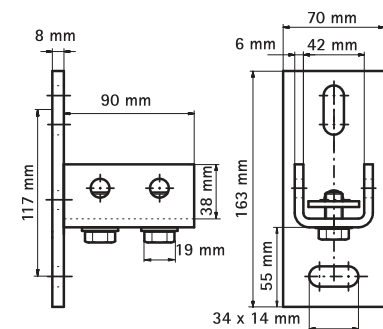
## BIS Strut Wall Plate (Heavy)

fixing to wall



### Features and Benefits

- U-profile welded on wall plate
- for wall fixing of rail
- rail can be fixed with slot downwards or sideways
- with pre-assembled slide nuts
- heavy design
- material: steel 1.0332
- hot dip galvanized
- tested for fire safety



| Part No.   | For Rail | T (Nm) | Pack 1 |
|------------|----------|--------|--------|
| 6658 1 804 | Strut    | 30     | 10     |

Also available in stainless steel 1.4401 (AISI-no. 316).

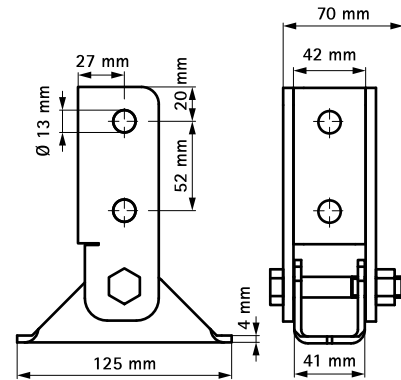
# BIS Strut Wall Plate (Hinged) (BUP1000)

fixing to wall



### Features and Benefits

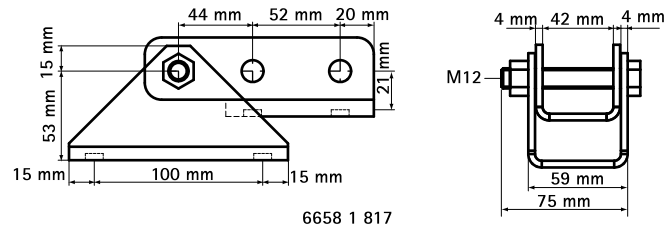
- wall plate with hinging U-profile
- for wall fixing of rail
- rail can be fixed with slot downwards or sideways
- also used to strengthen constructions with Strut 41x41
- material: steel 1.0332
- surface treatment:
  - product is part of the BIS UltraProtect® 1000 system
  - suitable for in- and outdoor applications
  - stands min. 1.000 hours salt spray test (max. 5% red rust) according to ISO 9227



| Part No.   | For Rail | Pack 1 |
|------------|----------|--------|
| 6658 8 814 | Strut    | 10     |

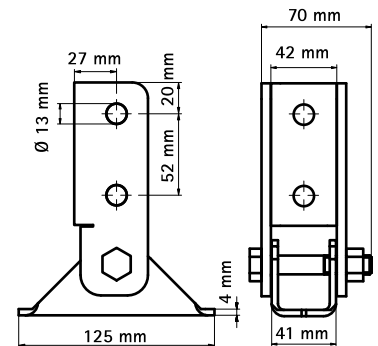
# BIS Strut Wall Plate (Hinged)

fixing to wall



### Features and Benefits

- wall plate with hinging U-profile
- for wall fixing of rail
- rail can be fixed with slot downwards or sideways
- also used to strengthen constructions with Strut 41x41
- material: steel 1.0332
- hot dip galvanized

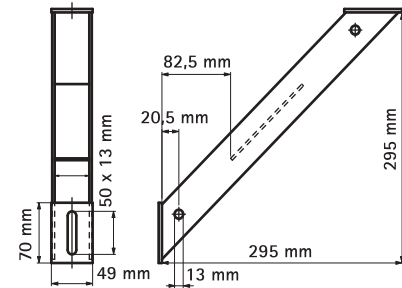


| Part No.   | For Rail | Pack 1 |
|------------|----------|--------|
| 6658 1 814 | Strut    | 10     |
| 6658 1 817 | Strut    | 10     |

Subject to modifications

## BIS Rail Prop (BUP1000)

reinforcement of cantilever arm



### Features and Benefits

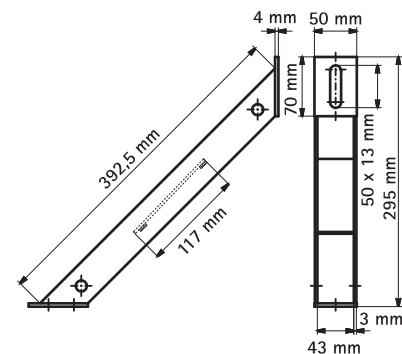
- 45° support bracket
- for fixing support under, top or on side of a cantilever arm
- also used to strengthen rail constructions
- CO<sub>2</sub> welded
- material: steel 1.0332

- surface protection:
  - product is part of the BIS UltraProtect® 1000 system
  - suitable for in- and outdoor applications
  - stands min. 1,000 hours salt spray test (max. 5% red rust) according to ISO 9227

| Part No.   | For Rail     | Pack 1 |
|------------|--------------|--------|
| 6628 8 530 | Strut + WM35 | 10     |

## BIS Strut Rail Prop

reinforcement of cantilever arm



### Features and Benefits

- 45° support bracket
- for fixing support under, top or on side of a cantilever arm
- also used to strengthen rail constructions
- CO<sub>2</sub> welded
- material: steel 1.0332
- hot dip galvanized

| Part No.   | For Rail | Pack 1 |
|------------|----------|--------|
| 6658 1 930 | Strut    | 10     |

# BIS Rail Prop (zp)

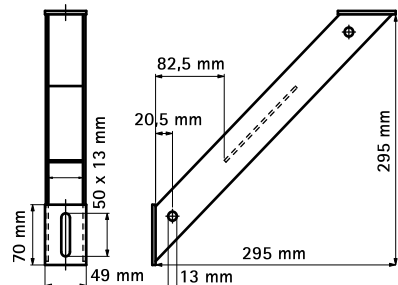
reinforcement of cantilever arm



### Features and Benefits

- 45° support bracket
- for fixing support under, top or on side of a cantilever arm
- also used to strengthen rail constructions
- CO<sub>2</sub> welded
- material: steel 1.0332
- zinc plated

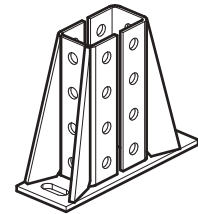
| Part No.  | For Rail     | Pack 1 |
|-----------|--------------|--------|
| 662 8 530 | Strut + WM35 | 10     |



Subject to modifications

# BIS Strut Floor Bracket 41, 82

to make Strut rail fabrications

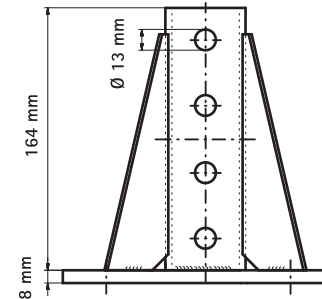
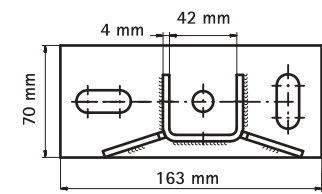


## Features and Benefits

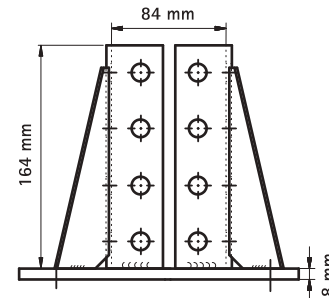
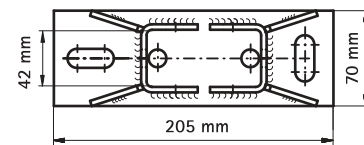
- to make fabrication with Strut Rail
- heavy design
- material: steel 1.0332
- hot dip galvanized

| Part No.   | For Rail    | Pack 1 |
|------------|-------------|--------|
| 6658 1 641 | Strut 41x41 | 10     |
| 6658 1 682 | Strut 41x82 | 5      |

Part No. 6658 1 641 also available in stainless steel 1.4404 (AISI-no. 316L).



6658 1 641

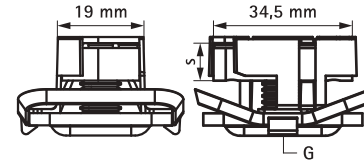
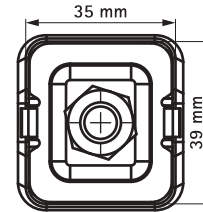


6658 1 682



## BIS RapidStrut® Slide Nuts G2 (BUP1000)

fixing to Strut rail



### Features and Benefits

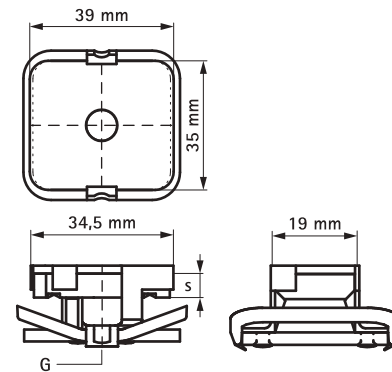
- slide nut with washer and BIS RapidStrut® spring
- ready-to-use pre-assembled for a quick fixing, and retains assembly in place before final tightening
- material: metal parts made of steel 1.0332; spring(s) made of POM (polyoxymethylene), green
- surface protection:
  - product is part of the BIS UltraProtect® 1000 system
  - suitable for in- and outdoor applications
  - stands min. 1,000 hours salt spray test (max. 5% red rust) according to ISO 9227

| Part No.    | G   | s (mm) | For Rail | T (max.) (Nm) | Fa,z (N) | Pack 1 | Pack 2 |
|-------------|-----|--------|----------|---------------|----------|--------|--------|
| 6651 8 5108 | M8  | 6.0    | Strut    | 15.0          | 6,000    | 20     | 200    |
| 6651 8 5110 | M10 | 8.0    | Strut    | 15.0          | 9,500    | 20     | 200    |
| 6651 8 5112 | M12 | 10.0   | Strut    | 30.0          | 10,000   | 20     | 200    |

Tested values in combination with BIS RapidStrut Rail 41x41x2.5mm.

## BIS RapidStrut® Slide Nuts

fixing to Strut rail



### Features and Benefits

- slide nut with washer and BIS RapidStrut® spring
- ready-to-use pre-assembled for a quick fixing, and retains assembly in place before final tightening
- material: metal parts made of steel 1.0332; spring(s) made of POM (polyoxymethylene), green
- zinc plated

| Part No.   | G  | s (mm) | For Rail | T (max.) (Nm) | Fa,z (N) | Pack 1 | Pack 2 |
|------------|----|--------|----------|---------------|----------|--------|--------|
| 6651 7 106 | M6 | 6.0    | Strut    | 7.5           | 5,300    | 20     | 200    |

Subject to modifications



# BIS Strut Slide Nuts (BUP1000)

fixing to Strut rail

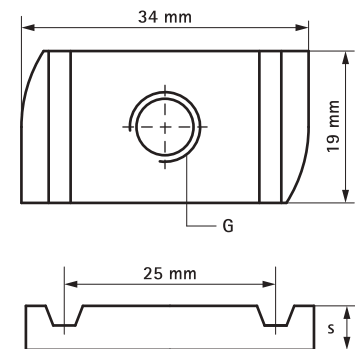


## Features and Benefits

- for all types of Strut Rail
- for tight fixing of accessories (e.g. connectors) on rail
- material: steel 1.0332
- surface protection:
  - product is part of the BIS UltraProtect® 1000 system
  - suitable for in- and outdoor applications
  - stands min. 1,000 hours salt spray test (max. 5% red rust) according to ISO 9227
- tested for fire safety

| Part No.   | G   | s (mm) | For Rail | T (max.) (Nm) | Fa,z (N) | Pack 1 |
|------------|-----|--------|----------|---------------|----------|--------|
| 6518 8 006 | M6  | 5.0    | Strut    | 7.5           | 5.300    | 100    |
| 6518 8 008 | M8  | 6.0    | Strut    | 15.0          | 6.000    | 100    |
| 6518 8 010 | M10 | 8.0    | Strut    | 15.0          | 9.500    | 100    |
| 6518 8 012 | M12 | 9.0    | Strut    | 30.0          | 10.000   | 100    |

M10 and above tested for fire safety.



# BIS Strut Slide Nuts (zp)

fixing to Strut rail

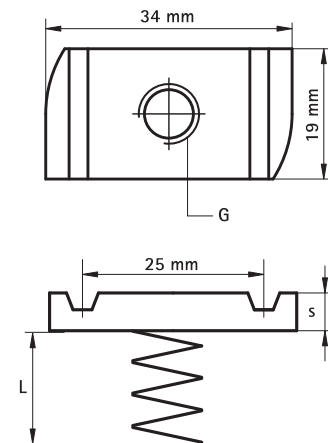
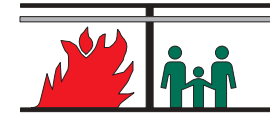


### Features and Benefits

- material: slide nut made of steel 1.0332; spring made of spring steel DIN17223 (class A)
- zinc plated
- tested for fire safety

| Part No.  | G   | L     | s (mm) | For Rail    | T (max.) (Nm) | Fa,z (N) | Pack 1 | Pack 2 |
|-----------|-----|-------|--------|-------------|---------------|----------|--------|--------|
| 651 7 006 | M6  | -     | 5.0    | Strut       | 7.5           | 5,300    | 100    | 600    |
| 651 7 008 | M8  | -     | 6.0    | Strut       | 15.0          | 6,000    | 100    | 500    |
| 651 7 010 | M10 | -     | 8.0    | Strut       | 15.0          | 9,500    | 100    | 600    |
| 651 7 012 | M12 | -     | 9.0    | Strut       | 30.0          | 10,000   | 100    | 500    |
|           |     |       |        |             |               |          |        |        |
| 651 7 106 | M6  | 13 mm | 5.0    | Strut 41x21 | 7.5           | 5,300    | 100    | 600    |
| 651 7 108 | M8  | 13 mm | 6.0    | Strut 41x21 | 15.0          | 6,000    | 100    | 600    |
| 651 7 110 | M10 | 13 mm | 8.0    | Strut 41x21 | 15.0          | 9,500    | 100    | 600    |
| 651 7 112 | M12 | 13 mm | 9.0    | Strut 41x21 | 30.0          | 10,000   | 100    | 600    |
|           |     |       |        |             |               |          |        |        |
| 651 7 206 | M6  | 33 mm | 5.0    | Strut 41x41 | 7.5           | 5,300    | 100    | 600    |
| 651 7 208 | M8  | 33 mm | 6.0    | Strut 41x41 | 15.0          | 6,000    | 100    | 600    |
| 651 7 210 | M10 | 33 mm | 8.0    | Strut 41x41 | 15.0          | 9,500    | 100    | 600    |
| 651 7 212 | M12 | 33 mm | 9.0    | Strut 41x41 | 30.0          | 10,000   | 100    | 600    |

M10 and above tested for fire safety.



# BIS Strut Slide Nuts (hdg)

fixing to Strut rail

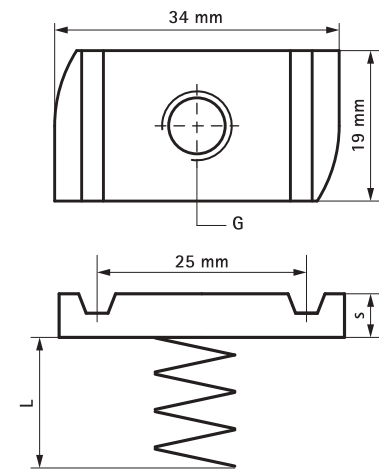


### Features and Benefits

- material: slide nut made of steel 1.0332; spring made of spring steel DIN17223 (class A)
- hot dip galvanized
- tested for fire safety

| Part No.  | G   | L     | s (mm) | For Rail    | T (max.) (Nm) | Fa,z (N) | Pack 1 |
|-----------|-----|-------|--------|-------------|---------------|----------|--------|
| 651 8 006 | M6  | -     | 5,0    | Strut       | 7.5           | 5.300    | 100    |
| 651 8 008 | M8  | -     | 6,0    | Strut       | 15.0          | 6.000    | 100    |
| 651 8 010 | M10 | -     | 8,0    | Strut       | 15.0          | 9.500    | 100    |
| 651 8 012 | M12 | -     | 9,0    | Strut       | 30.0          | 10.000   | 100    |
|           |     |       |        |             |               |          |        |
| 651 8 106 | M6  | 13 mm | 5,0    | Strut 41x21 | 7.5           | 5.300    | 100    |
| 651 8 108 | M8  | 13 mm | 6,0    | Strut 41x21 | 15.0          | 6.000    | 100    |
| 651 8 110 | M10 | 13 mm | 8,0    | Strut 41x21 | 15.0          | 9.500    | 100    |
| 651 8 112 | M12 | 13 mm | 9,0    | Strut 41x21 | 30.0          | 10.000   | 100    |
|           |     |       |        |             |               |          |        |
| 651 8 206 | M6  | 33 mm | 5,0    | Strut 41x41 | 7.5           | 5.300    | 100    |
| 651 8 208 | M8  | 33 mm | 6,0    | Strut 41x41 | 15.0          | 6.000    | 100    |
| 651 8 210 | M10 | 33 mm | 8,0    | Strut 41x41 | 15.0          | 9.500    | 100    |
| 651 8 212 | M12 | 33 mm | 9,0    | Strut 41x41 | 30.0          | 10.000   | 100    |

M10 and above tested for fire safety.



Subject to modifications

## BIS Strut Square Slide Nut

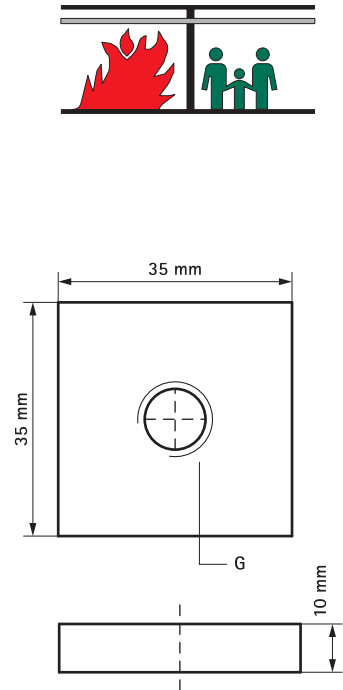
fixing to Strut rail



### Features and Benefits

- material: steel 1.0332
- zinc plated
- tested for fire safety

| Part No.  | G   | For Rail | Pack 1 | Pack 2 |
|-----------|-----|----------|--------|--------|
| 651 7 016 | M16 | Strut    | 50     | 250    |



## BIS RapidStrut® Slide Nut Plastic Tabs (BUP1000)

fixing to Strut rail

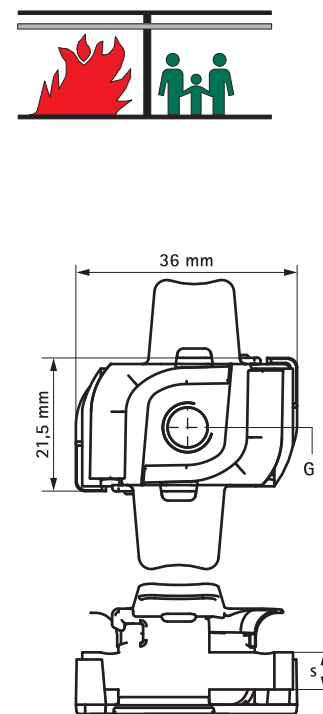


### Features and Benefits

- slide nut with plastic 'tabs'
- for all types of Strut Rail
- for tight fixing of accessories (e.g. connectors) on rail
- with plastic tabs which simplifies inserting and positioning
- material: slide nut made of steel 1.0332; tabs made of PP (polypropylene), green
- surface protection:
  - product is part of the BIS UltraProtect® 1000 system
  - suitable for in- and outdoor applications
  - stands min. 1,000 hours salt spray test (max. 5% red rust) according to ISO 9227
- tested for fire safety

| Part No.    | G   | s (mm) | For Rail | T (max.) (Nm) | Fa,z (N) | Pack 1 |
|-------------|-----|--------|----------|---------------|----------|--------|
| 6518 6 8006 | M6  | 5,0    | Strut    | 7.5           | 5,300    | 100    |
| 6518 6 8008 | M8  | 6,0    | Strut    | 15.0          | 6,000    | 100    |
| 6518 6 8010 | M10 | 8,0    | Strut    | 15.0          | 9,500    | 100    |
| 6518 6 8012 | M12 | 9,0    | Strut    | 30.0          | 10,000   | 100    |

M10 and above tested for fire safety.





## BIS RapidStrut® Slide Nuts with Plastic Tabs (zp)

fixing to Strut rail

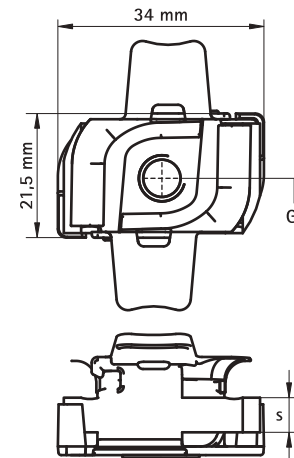


### Features and Benefits

- slide nut with plastic 'tabs'
- for all types of Strut Rail
- for tight fixing of accessories (e.g. connectors) on rail
- with plastic tabs which simplifies inserting and positioning
- material: slide nut made of steel 1.0332; tabs made of PP (polypropylene), green
- zinc plated
- tested for fire safety

| Part No.  | G   | s (mm) | For Rail | T (max.) (Nm) | Fa,z (N) | Pack 1 |
|-----------|-----|--------|----------|---------------|----------|--------|
| 651 8 606 | M6  | 5,0    | Strut    | 7.5           | 5.300    | 100    |
| 651 8 608 | M8  | 6,0    | Strut    | 15.0          | 6.000    | 100    |
| 651 8 610 | M10 | 8,0    | Strut    | 15.0          | 9.500    | 100    |
| 651 8 612 | M12 | 9,0    | Strut    | 30.0          | 10.000   | 100    |

M10 and above tested for fire safety.



## BIS RapidStrut® Slide Nut with Plastic Tabs (hdg)

fixing to Strut rail

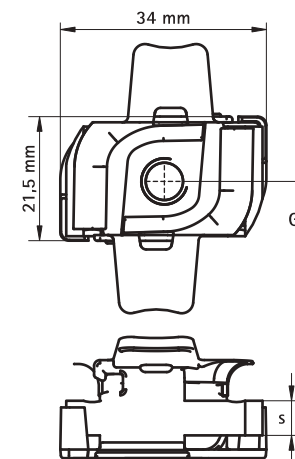


### Features and Benefits

- slide nut with plastic 'tabs'
- for all types of Strut Rail
- for tight fixing of accessories (e.g. connectors) on rail
- with plastic tabs which simplifies inserting and positioning
- material: slide nut made of steel 1.0332; tabs made of PP (polypropylene), green
- hot dip galvanized
- tested for fire safety

| Part No.    | G   | s (mm) | For Rail | T (max.) (Nm) | Fa,z (N) | Pack 1 |
|-------------|-----|--------|----------|---------------|----------|--------|
| 6518 6 1008 | M8  | 6,0    | Strut    | 15.0          | 6.000    | 100    |
| 6518 6 1010 | M10 | 8,0    | Strut    | 15.0          | 9.500    | 100    |
| 6518 6 1012 | M12 | 9,0    | Strut    | 30.0          | 10.000   | 100    |

M10 and above tested for fire safety.



Subject to modifications

# BIS RapidStrut® Hammerfix G2 (BUP1000)

fixing to Strut rail

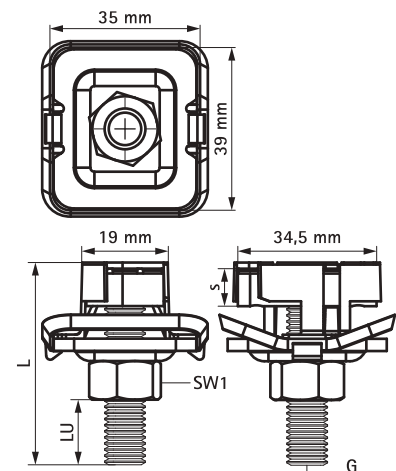


## Features and Benefits

- slide nut with stud bolt, washer and BIS RapidStrut® spring
- ready-to-use pre-assembled for a quick fixing, and retains assembly in place before final tightening
- material: metal parts made of steel 1.0332; spring(s) made of POM (polyoxymethylene), green
- surface protection:
  - product is part of the BIS UltraProtect® 1000 system
  - suitable for in- and outdoor applications
  - stands min. 1,000 hours salt spray test (max. 5% red rust) according to ISO 9227

| Part No.    | G   | L      | LU<br>(mm) | s<br>(mm) | SW1<br>(mm) | T (max.)<br>(Nm) | Fa,z<br>(N) | Pack 1 | Pack 2 |
|-------------|-----|--------|------------|-----------|-------------|------------------|-------------|--------|--------|
| 6527 8 5804 | M8  | 40 mm  | 16         | 6,0       | 13          | 15,0             | 6,000       | 5      | 150    |
| 6527 8 5805 | M8  | 50 mm  | 26         | 6,0       | 13          | 15,0             | 6,000       | 15     | 150    |
| 6527 8 5806 | M8  | 60 mm  | 36         | 6,0       | 13          | 15,0             | 6,000       | 5      | 100    |
| 6527 8 5808 | M8  | 80 mm  | 56         | 6,0       | 13          | 15,0             | 6,000       | 5      | 100    |
| 6527 8 5810 | M8  | 100 mm | 76         | 6,0       | 13          | 15,0             | 6,000       | 5      | 100    |
| 6527 8 5004 | M10 | 40 mm  | 12         | 8,0       | 17          | 15,0             | 9,500       | 5      | 150    |
| 6527 8 5006 | M10 | 60 mm  | 32         | 8,0       | 17          | 15,0             | 9,500       | 5      | 100    |
| 6527 8 5008 | M10 | 80 mm  | 52         | 8,0       | 17          | 15,0             | 9,500       | 5      | 100    |
| 6527 8 5204 | M12 | 40 mm  | 10         | 10,0      | 19          | 30,0             | 10,000      | 5      | 100    |
| 6527 8 5206 | M12 | 60 mm  | 30         | 10,0      | 19          | 30,0             | 10,000      | 5      | 100    |

Tested values in combination with BIS RapidStrut Rail 41x41x2,5mm.





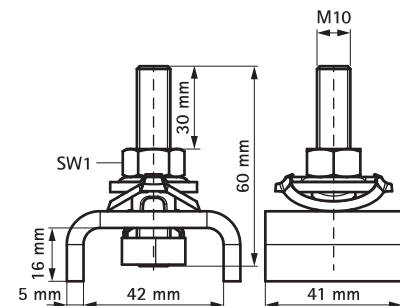
# BIS RapidStrut® Hammerfix 'U' G2 (BUP1000)

fixing to Strut rail



### Features and Benefits

- slide nut with stud bolt, U-shaped washer and BIS RapidStrut® spring
- U-shaped for extra stability
- ready-to-use pre-assembled for a quick fixing, and retains assembly in place before final tightening
- visual guide to check the position of the slide nut
- material: metal parts made of steel 1.0332; spring(s) made of POM (polyoxymethylene), green
- surface protection:
  - product is part of the BIS UltraProtect® 1000 system
  - suitable for in- and outdoor applications
  - stands min. 1,000 hours salt spray test (max. 5% red rust) according to ISO 9227



| Part No.    | For Rail | SW1 (mm) | T (max.) (Nm) | Fa,z (N) | Pack 1 |
|-------------|----------|----------|---------------|----------|--------|
| 6652 8 5006 | Strut    | 17       | 15.0          | 10.000   | 50     |

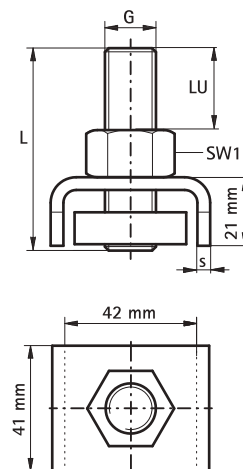
# BIS Strut Tee-Bolt 'U' (BUP1000)

fixing to Strut rail



### Features and Benefits

- slide nut with stud bolt and U-shaped washer
- U-shaped for extra stability
- ready-to-use pre-assembled
- material: steel 1.0332
- surface protection:
  - product is part of the BIS UltraProtect® 1000 system
  - suitable for in- and outdoor applications
  - stands min. 1,000 hours salt spray test (max. 5% red rust) according to ISO 9227
  - tested for fire safety



| Part No.   | G   | L     | LU (mm) | s (mm) | For Rail | SW1 (mm) | Pack 1 |
|------------|-----|-------|---------|--------|----------|----------|--------|
| 6527 8 606 | M16 | 60 mm | 24      | 4,0    | Strut    | 24       | 5      |

Subject to modifications



# BIS RapidStrut® Hammerfix Female Thread

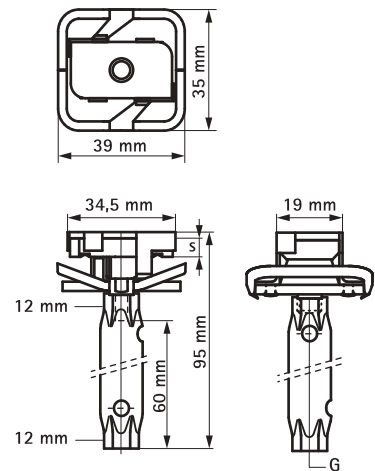
fixing to Strut rail



## Features and Benefits

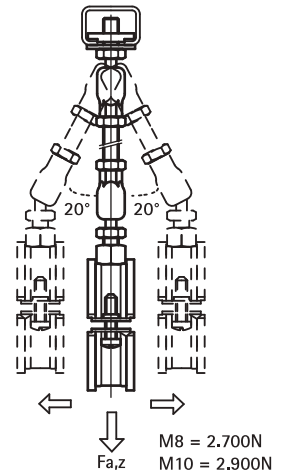
- slide nut with female thread, washer and BIS RapidStrut® spring
- ready-to-use pre-assembled for a quick fixing, and retains assembly in place before final tightening
- with inspection hole to check screw-in depth of threaded rod
- screw-in depth is continuously variable
- material: metal parts made of steel 1.0332; spring(s) made of POM (polyoxymethylene), green
- zinc plated

| Part No.   | G   | L     | s<br>(mm) | For Rail | T (max.)<br>(Nm) | Fa,z<br>(N) | Pack 1 |
|------------|-----|-------|-----------|----------|------------------|-------------|--------|
| 6652 9 808 | M8  | 95 mm | 6,0       | Strut    | 15,0             | 7.500       | 25     |
| 6652 9 008 | M10 | 95 mm | 8,0       | Strut    | 15,0             | 6,000       | 25     |



# BIS RapidStrut® Ball Swivel Hangers

fixing to Strut rail

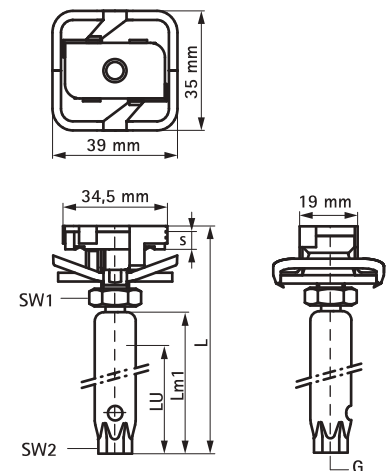


### Features and Benefits

- slide nut with ball swivel hanger, washer and BIS RapidStrut® spring
- recommended for metal pipes up to DN 50, plastic pipes up to DN 100
- ready-to-use pre-assembled for a quick fixing, and retains assembly in place before final tightening
- with inspection hole to check screw-in depth (attention: when the threaded rod is screwed-in too deep, the ball swivel is blocked)
- screw-in depth is continuously variable (see LU)
- material: metal parts made of steel 1.0332; spring(s) made of POM (polyoxymethylene), green
- zinc plated

| Part No.   | G   | L     | LU<br>(mm) | s<br>(mm) | For Rail | Lm1<br>(mm) | SW1<br>(mm) | SW2<br>(mm) | T (max.)<br>(Nm) | Fa,z<br>(N) | Pack 1 |
|------------|-----|-------|------------|-----------|----------|-------------|-------------|-------------|------------------|-------------|--------|
| 6653 0 805 | M8  | 80 mm | 43         | 6,0       | Strut    | 50          | 13          | 10          | 15.0             | 2,700       | 25     |
| 6653 0 005 | M10 | 80 mm | 43         | 8,0       | Strut    | 50          | 13          | 12          | 15.0             | 2,900       | 25     |

Please note. Always use 2 ball swivel hangers (see application picture). The maximum length change that can be dealt with, depends on the fixing distance (ceiling - pipe). The height difference that occurs as a result, needs to be taken into consideration. To be used in combination with BIS Ball Swivel Hangers. Product can be found on page E 10 05.



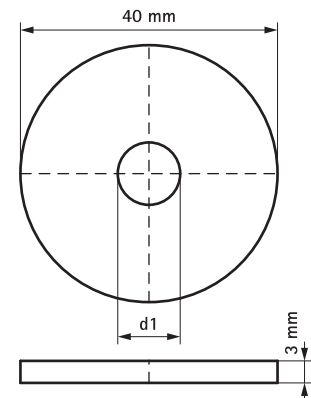
## BIS Strut Washers – Flat (BUP1000)

to make Strut rail fabrications



### Features and Benefits

- flat washer
- material: steel 1.0332
- surface protection:
  - product is part of the BIS UltraProtect® 1000 system
  - suitable for in- and outdoor applications
  - stands min. 1,000 hours salt spray test (max. 5% red rust) according to ISO 9227



| Part No.   | B (mm) | For Rail | d1 (mm) | Pack 1 |
|------------|--------|----------|---------|--------|
| 6538 1 508 | 40     | Strut    | Ø 8,4   | 50     |
| 6538 1 510 | 40     | Strut    | Ø 10,5  | 100    |
| 6538 1 512 | 40     | Strut    | Ø 13,0  | 100    |

Ø 10,5 and above tested for fire safety.  
Also available in stainless steel 1.4401 (AISI 316).

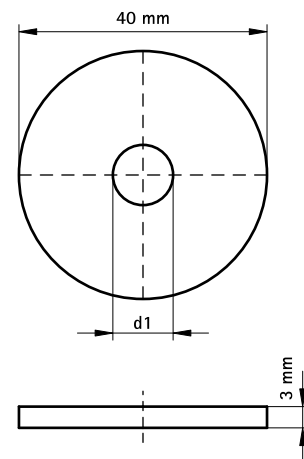
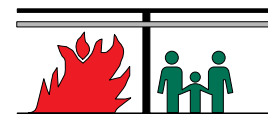
## BIS Strut Washers – Flat (zp)

fixing to Strut rail



### Features and Benefits

- flat washer
- material: steel 1.0332
- zinc plated
- tested for fire safety

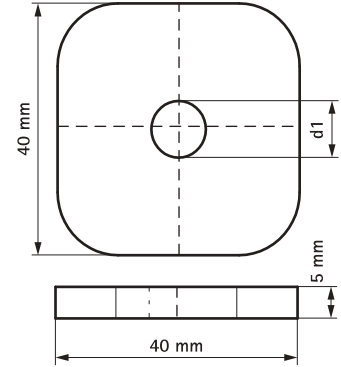


| Part No.  | B (mm) | For Rail | d1 (mm) | Pack 1 | Pack 2 |
|-----------|--------|----------|---------|--------|--------|
| 653 3 506 | 40     | Strut    | Ø 6,4   | 50     | 250    |
| 653 3 508 | 40     | Strut    | Ø 8,4   | 50     | 250    |
| 653 3 510 | 40     | Strut    | Ø 10,5  | 50     | 250    |
| 653 3 512 | 40     | Strut    | Ø 13,0  | 50     | 250    |

Ø 10,5 and above tested for fire safety.  
Also available in stainless steel 1.4401 (AISI 316).

## BIS Strut Washers - Flat (hdg)

to make Strut rail fabrications



### Features and Benefits

- flat washer
- material: steel 1.0332
- hot dip galvanized

| Part No.   | For Rail | d1 (mm) | Pack 1 | Pack 2 |
|------------|----------|---------|--------|--------|
| 6658 0 008 | Strut    | Ø 9,0   | 50     | 200    |
| 6658 0 010 | Strut    | Ø 11,0  | 50     | 200    |
| 6658 0 012 | Strut    | Ø 13,0  | 50     | 200    |

Also available in stainless steel 1.4401 (AISI 316).

## BIS Strut Washers – U-shaped (BUP1000)

to make Strut rail fabrications

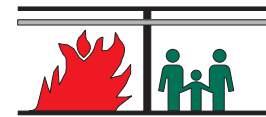


### Features and Benefits

- U-shaped washer
- U-shaped for extra stability
- material: steel 1.0332
- surface protection:
  - product is part of the BIS UltraProtect® 1000 system
  - suitable for in- and outdoor applications
  - stands min. 1,000 hours salt spray test (max. 5% red rust) according to ISO 9227
  - tested for fire safety

| Part No.   | For Rail | d1 (mm) | Pack 1 |
|------------|----------|---------|--------|
| 6658 8 008 | Strut    | Ø 9,0   | 50     |
| 6658 8 010 | Strut    | Ø 11,0  | 50     |
| 6658 8 012 | Strut    | Ø 13,0  | 50     |
| 6658 8 016 | Strut    | Ø 17,0  | 50     |

Also available in stainless steel 1.4401 (AISI 316).



## BIS Strut Washers – U-shaped

to make Strut rail fabrications



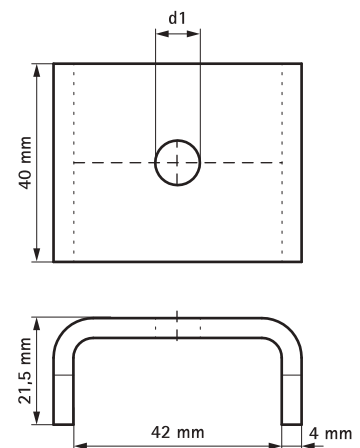
### Features and Benefits

- U-shaped washer
- U-shaped for extra stability
- material: steel 1.0332
- hot dip galvanized
- tested for fire safety

| Part No.   | For Rail | d1 (mm) | Pack 1 |
|------------|----------|---------|--------|
| 6658 1 008 | Strut    | Ø 9,0   | 50     |
| 6658 1 010 | Strut    | Ø 11,0  | 50     |
| 6658 1 012 | Strut    | Ø 13,0  | 50     |
| 6658 1 016 | Strut    | Ø 17,0  | 50     |

Ø 11,0 and above tested for fire safety.  
Also available in stainless steel 1.4401 (AISI 316).

Subject to modifications





# BIS RapidStrut® Rail Connectors 90° G2 (BUP1000)

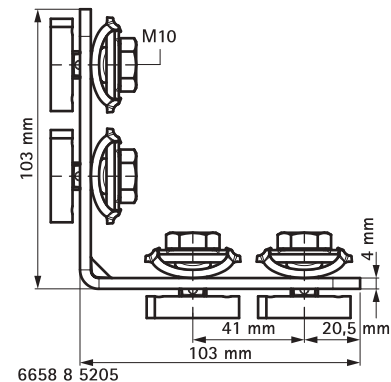
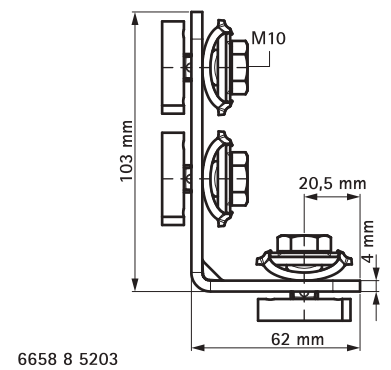
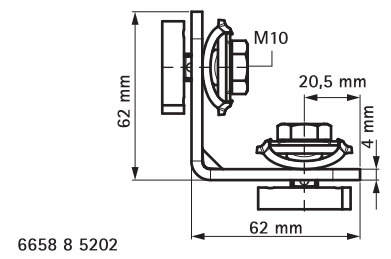
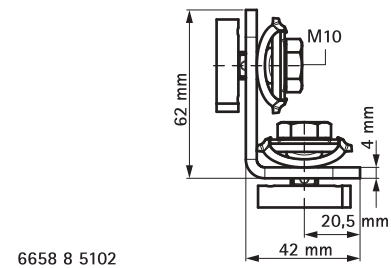
to make Strut rail fabrications



### Features and Benefits

- connector with pre-assembled BIS RapidStrut® Slide nut(s)
- to make fabrication with Strut Rail
- ready-to-use pre-assembled for a quick fixing, and retains assembly in place before final tightening
- 'Direct Twist' technology for easy and secure installation
- visual guide to check the position of the slide nut
- Part Nr. 6658 8 520X: optimized for easy installation with electrical tools
- material: metal parts made of steel 1.0332; spring(s) made of POM (polyoxymethylene), green
- surface protection:
  - product is part of the BIS UltraProtect® 1000 system
  - suitable for in- and outdoor applications
  - stands min. 1,000 hours salt spray test (max. 5% red rust) according to ISO 9227

| Part No.    | Model         | Type                  | For Rail | a (°) | T (max.) (Nm) | Pack 1 |
|-------------|---------------|-----------------------|----------|-------|---------------|--------|
| 6658 8 5102 | Short / short | 2 sides pre-assembled | Strut    | 90°   | 15.0          | 50     |
| 6658 8 5202 | Short / short | 2 sides pre-assembled | Strut    | 90°   | 15.0          | 50     |
| 6658 8 5203 | Short / long  | 2 sides pre-assembled | Strut    | 90°   | 15.0          | 25     |
| 6658 8 5205 | Long / long   | 2 sides pre-assembled | Strut    | 90°   | 15.0          | 20     |



Subject to modifications



# BIS RapidStrut® Rail Connectors 90° (BUP1000)

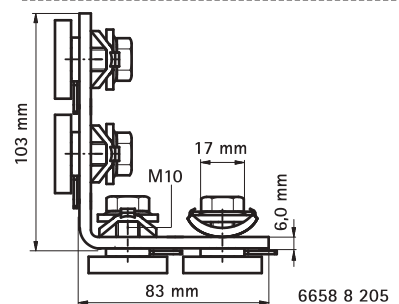
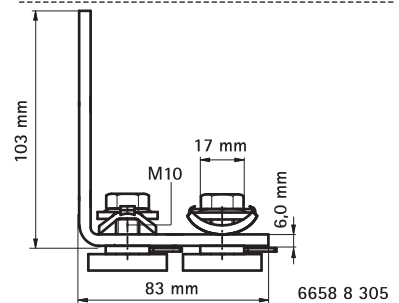
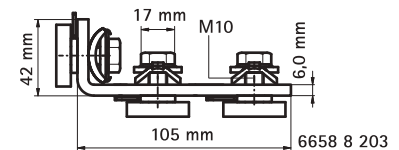
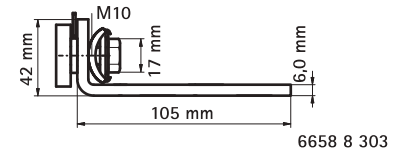
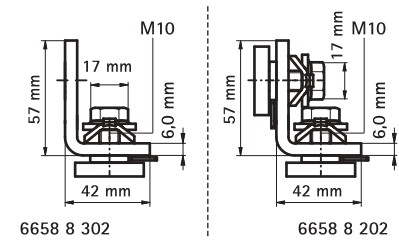
to make Strut rail fabrications



## Features and Benefits

- connector with pre-assembled BIS RapidStrut® Slide nut(s)
- to make fabrication with Strut Rail
- ready-to-use pre-assembled for a quick fixing, and retains assembly in place before final tightening
- material: metal parts made of steel 1.0332; spring(s) made of POM (polyoxymethylene), green
- surface protection:
  - product is part of the BIS UltraProtect® 1000 system
  - suitable for in- and outdoor applications
  - stands min. 1,000 hours salt spray test (max. 5% red rust) according to ISO 9227

| Part No.   | Model         | Type                 | For Rail | a (°) | T (max.) (Nm) | Pack 1 |
|------------|---------------|----------------------|----------|-------|---------------|--------|
| 6658 8 302 | Short / short | 1 side pre-assembled | Strut    | 90°   | 15.0          | 50     |
| 6658 8 303 | Short / long  | 1 side pre-assembled | Strut    | 90°   | 15.0          | 25     |
| 6658 8 305 | Long / long   | 1 side pre-assembled | Strut    | 90°   | 15.0          | 20     |



# BIS Strut Connectors 90°

to make Strut rail fabrications

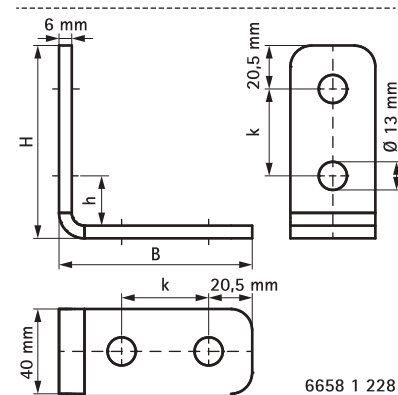
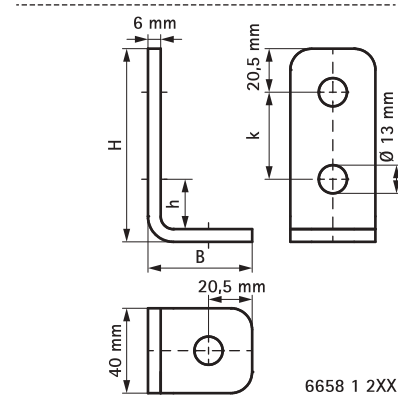
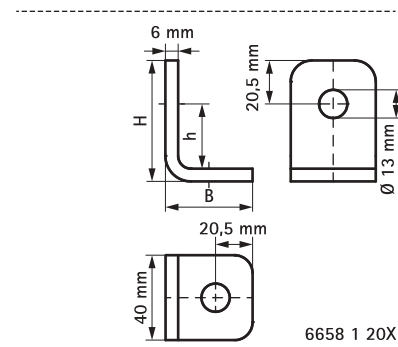


### Features and Benefits

- to make fabrication with Strut Rail
- easy fitting due to rounded edges
- material: steel 1.0332
- hot dip galvanized

| Part No.   | Model   | B (mm) | H (mm) | h (mm) | For Rail | k (mm) | a (°) | Pack 1 |
|------------|---------|--------|--------|--------|----------|--------|-------|--------|
| 6658 1 201 | 2 holes | 49     | 49     | 23     | Strut    | -      | 90°   | 50     |
| 6658 1 207 | 2 holes | 57     | 41     | 15     | Strut    | -      | 90°   | 50     |
| 6658 1 214 | 3 holes | 99     | 41     | 15     | Strut    | 41     | 90°   | 25     |
| 6658 1 221 | 3 holes | 91     | 49     | 23     | Strut    | 41     | 90°   | 25     |
| 6658 1 228 | 4 holes | 91     | 91     | 23     | Strut    | 41     | 90°   | 25     |

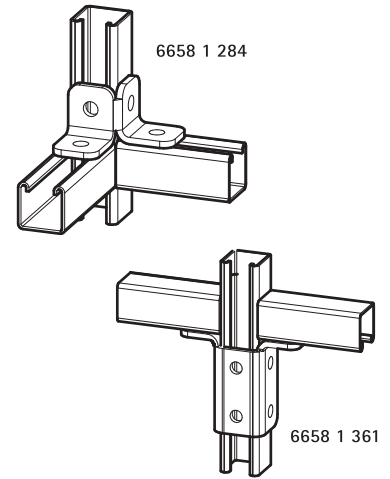
Also available in stainless steel.



Subject to modifications

# BIS Strut Connectors 90°

to make Strut rail fabrications

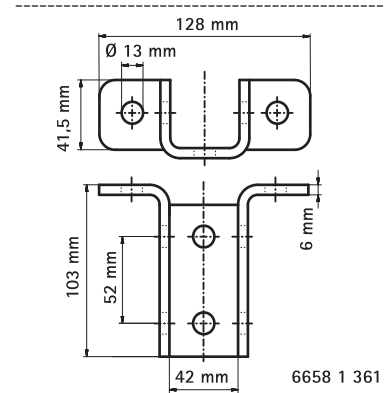
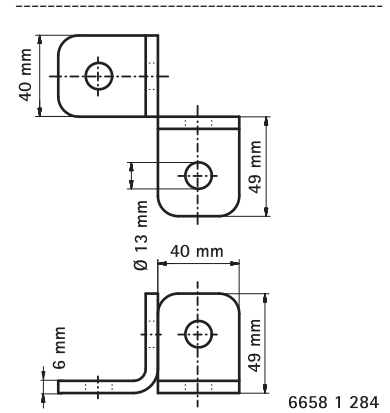


### Features and Benefits

- to make fabrication with Strut Rail
- easy fitting due to rounded edges
- material: steel 1.0332
- hot dip galvanized

| Part No.   | For Rail | a<br>(°) | Pack 1 |
|------------|----------|----------|--------|
| 6658 1 284 | Strut    | 90°      | 25     |
| 6658 1 361 | Strut    | 90°      | 10     |

Part No. 6658 1 361 also available in stainless steel 1.4401 (AISI-no. 316).



## BIS Strut Connector 90°

to make Strut rail fabrications

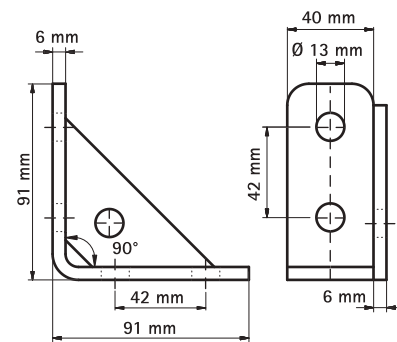


### Features and Benefits

- to make fabrication with Strut Rail
- material: steel 1.0332
- easy fitting due to rounded edges
- hot dip galvanized

| Part No.      | For Rail | a (°) | Pack 1 |
|---------------|----------|-------|--------|
| DMC6658 1 291 | Strut    | 90°   | 25     |

Also available in stainless steel 1.4401 (AISI-no. 316).



## BIS Strut Connector 90° (BUP1000)

to make Strut rail fabrications

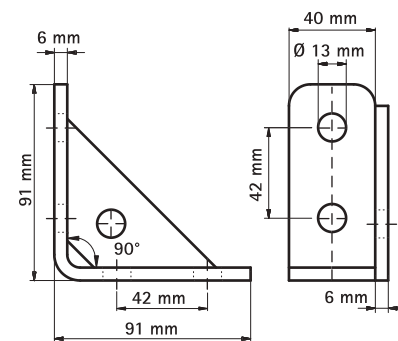


### Features and Benefits

- to make fabrication with Strut Rail
- surface protection:
- easy fitting due to rounded edges
- product is part of the BIS UltraProtect®1000 system
- material: steel 1.0332
- suitable for in-and outdoor applications
- stands min. 1,000 hours salt spray test (max. 5% red rust) according to ISO 9227

| Part No.   | For Rail | a (°) | Pack 1 |
|------------|----------|-------|--------|
| 6658 8 291 | Strut    | 90°   | 25     |

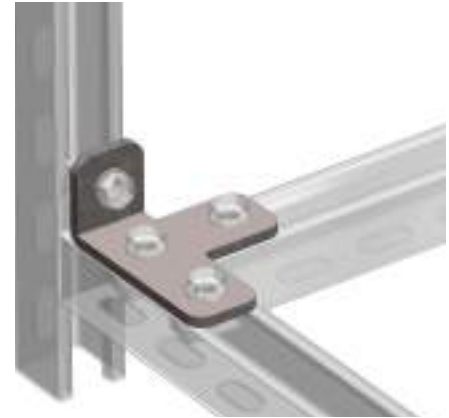
Also available in stainless steel 1.4401 (AISI-no. 316).



Subject to modifications

# BIS Strut Connectors

to make Strut rail fabrications

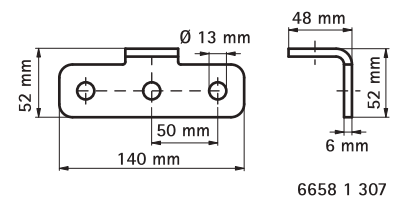
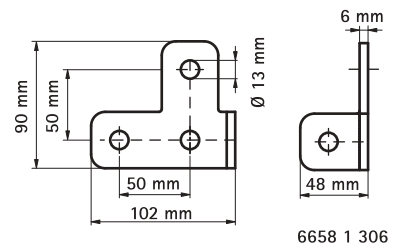
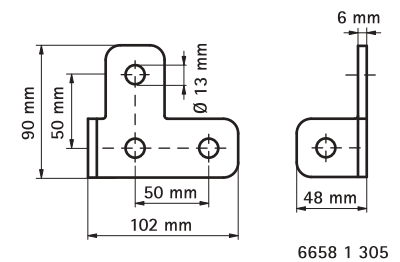
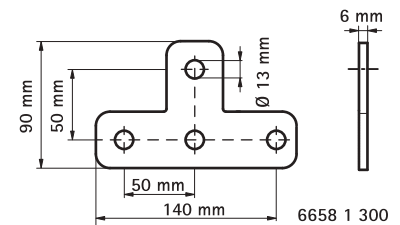
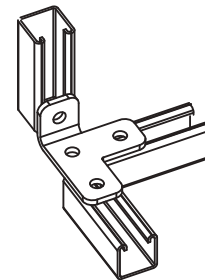


## Features and Benefits

- to make fabrication with Strut Rail
- easy fitting due to rounded edges
- material: steel 1.0332
- hot dip galvanized

| Part No.   | For Rail | a<br>(°) | Pack 1 |
|------------|----------|----------|--------|
| 6658 1 300 | Strut    | -        | 25     |
| 6658 1 305 | Strut    | 90°      | 25     |
| 6658 1 307 | Strut    | 90°      | 25     |

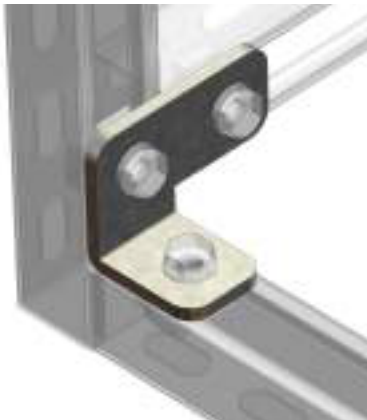
Also available in stainless steel 1.4404 (AISI-no. 316L).





# BIS Strut Connectors

to make Strut rail fabrications

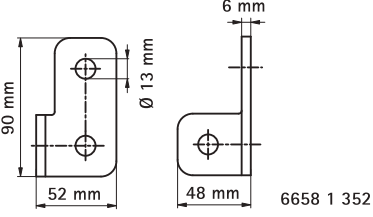
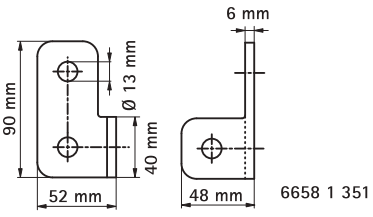
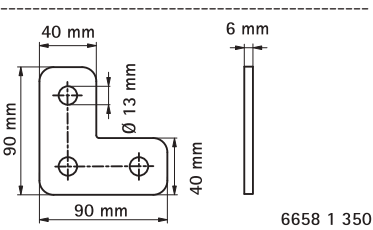
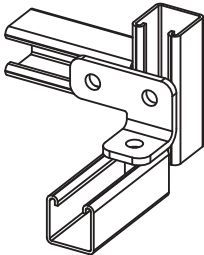


### Features and Benefits

- to make fabrication with Strut Rail
- material: steel 1.0332
- easy fitting due to rounded edges
- hot dip galvanized

| Part No.   | For Rail | a<br>(°) | Pack 1 |
|------------|----------|----------|--------|
| 6658 1 350 | Strut    | 90°      | 25     |
| 6658 1 351 | Strut    | 90°      | 25     |
| 6658 1 352 | Strut    | 90°      | 25     |

Also available in stainless steel 1.4404 (AISI-no. 316L).



Subject to modifications

# BIS Strut Connectors 120°, 135°, 150°

to make Strut rail fabrications

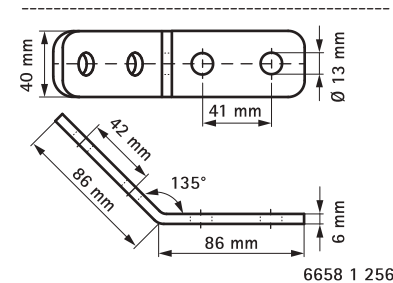
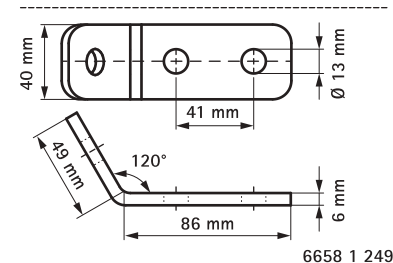
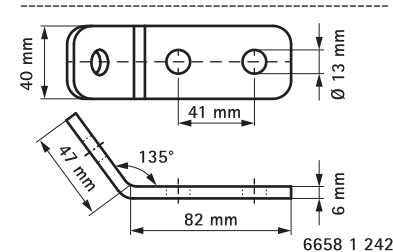
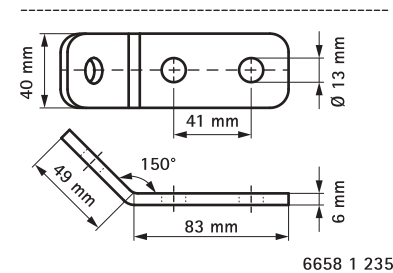
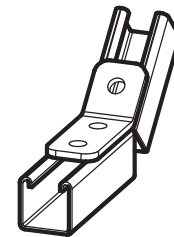


## Features and Benefits

- to make fabrication with Strut Rail
- easy fitting due to rounded edges
- material: steel 1.0332
- hot dip galvanized

| Part No.   | For Rail | a (°) | Pack 1 |
|------------|----------|-------|--------|
| 6658 1 235 | Strut    | 150°  | 25     |
| 6658 1 242 | Strut    | 135°  | 25     |
| 6658 1 249 | Strut    | 120°  | 25     |
| 6658 1 256 | Strut    | 135°  | 25     |

Part No. 6658 1 256 also available in stainless steel 1.4401 (AISI-no. 316).





# BIS Strut Connectors 30°, 45°, 60°

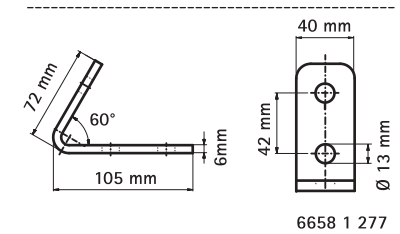
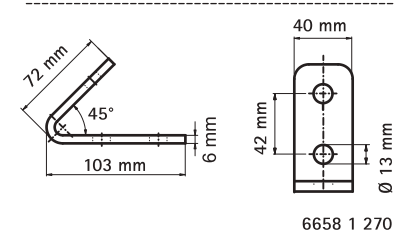
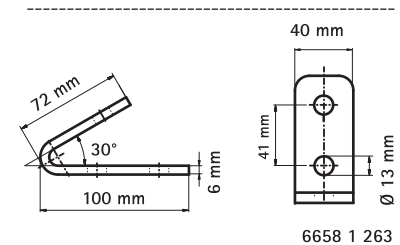
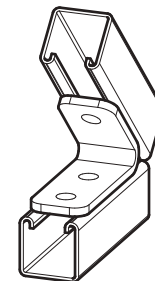
to make Strut rail fabrications



### Features and Benefits

- to make fabrication with Strut Rail
- easy fitting due to rounded edges
- material: steel 1.0332
- hot dip galvanized

| Part No.   | For Rail | a (°) | Pack 1 |
|------------|----------|-------|--------|
| 6658 1 263 | Strut    | 30°   | 25     |
| 6658 1 270 | Strut    | 45°   | 25     |
| 6658 1 277 | Strut    | 60°   | 25     |





# BIS RapidStrut® Rail Connectors G2 (BUP1000)

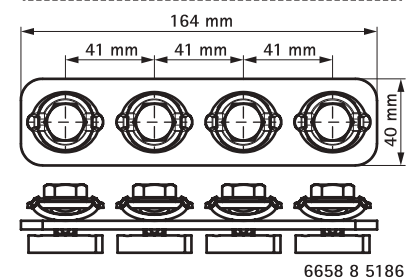
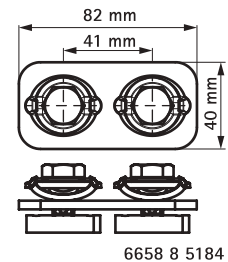
to make Strut rail fabrications



## Features and Benefits

- connector with pre-assembled BIS RapidStrut® Slide nut(s)
- to make fabrication with Strut Rail
- ready-to-use pre-assembled for a quick fixing, and retains assembly in place before final tightening
- 'Direct Twist' technology for easy and secure installation
- visual guide to check the position of the slide nut
- optimized for easy installation with electrical tools
- material: metal parts made of steel 1.0332; spring(s) made of POM (polyoxymethylene), green
- surface protection:
  - product is part of the BIS UltraProtect® 1000 system
  - suitable for in- and outdoor applications
  - stands min. 1,000 hours salt spray test (max. 5% red rust) according to ISO 9227

| Part No.    | Type    | L      | For Rail | T (max.) (Nm) | Pack 1 |
|-------------|---------|--------|----------|---------------|--------|
| 6658 8 5184 | 2 x M10 | 82 mm  | Strut    | 15.0          | 50     |
| 6658 8 5186 | 4 x M10 | 164 mm | Strut    | 15.0          | 25     |





# BIS RapidStrut® Rail Connectors

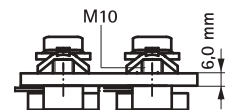
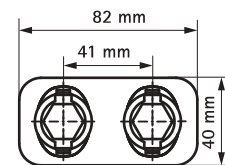
to make Strut rail fabrications



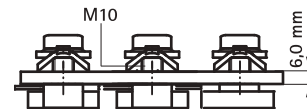
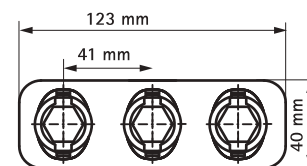
### Features and Benefits

- connector with pre-assembled BIS RapidStrut® Slide nut(s)
- to make fabrication with Strut Rail
- ready-to-use pre-assembled for a quick fixing, and retains assembly in place before final tightening
- material: metal parts made of steel 1.0332; spring(s) made of POM (polyoxymethylene), green
- zinc plated

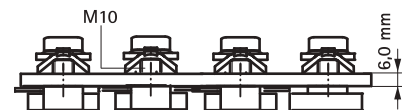
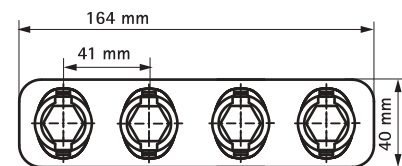
| Part No.   | Type    | L      | For Rail | T (max.) (Nm) | Pack 1 |
|------------|---------|--------|----------|---------------|--------|
| 6658 7 185 | 3 x M10 | 123 mm | Strut    | 15.0          | 25     |



6658 7 184



6658 7 185

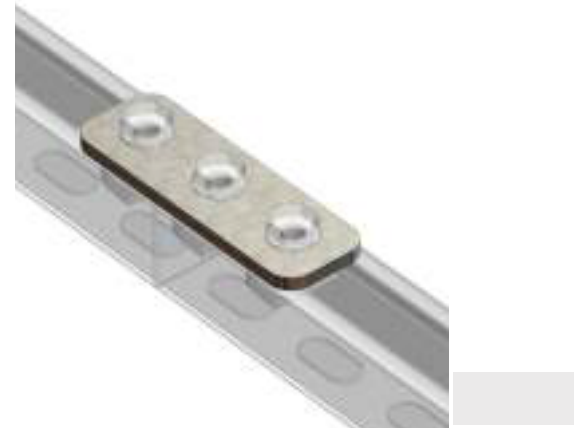


6658 7 186

Subject to modifications

# BIS Rectangular Connectors

to make Strut rail fabrications

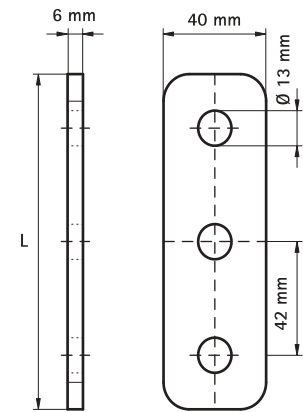


## Features and Benefits

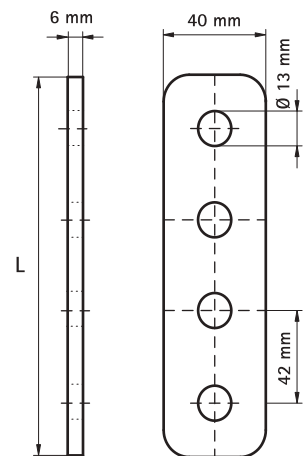
- flat connector
- to make fabrication with Strut Rail
- material: steel 1.0332
- hot dip galvanized

| Part No.   | L      | For Rail | Pack 1 |
|------------|--------|----------|--------|
| 6658 0 312 | 124 mm | Strut    | 50     |
| 6658 0 412 | 166 mm | Strut    | 50     |

Also available in stainless steel 1.4404 (AISI-no. 316L).



6658 0 312

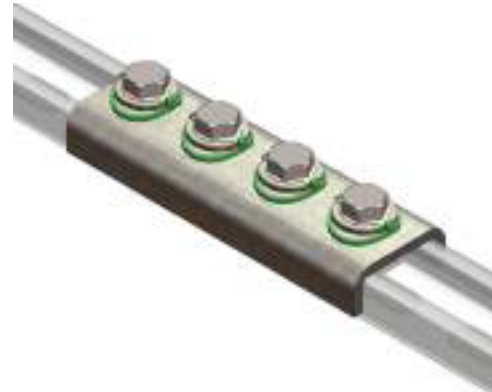


6658 0 412



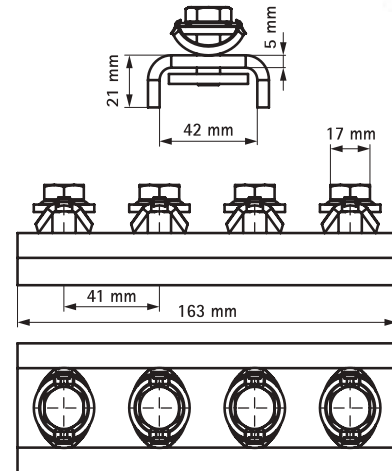
## BIS RapidStrut® Rail Connector – U-shaped G2

to make Strut rail fabrications



### Features and Benefits

- connector with pre-assembled BIS RapidStrut® Slide nut(s)
- to make fabrication with Strut Rail
- ready-to-use pre-assembled for a quick fixing, and retains assembly in place before final tightening
- material: metal parts made of steel 1.0332; spring(s) made of POM (polyoxymethylene), green
- surface protection:
  - product is part of the BIS UltraProtect® 1000 system
  - suitable for in- and outdoor applications
  - stands min. 1,000 hours salt spray test (max. 5% red rust) according to ISO 9227



| Part No.    | For Rail | T (max.) (Nm) | Pack 1 |
|-------------|----------|---------------|--------|
| 6658 8 5421 | Strut    | 15.0          | 20     |

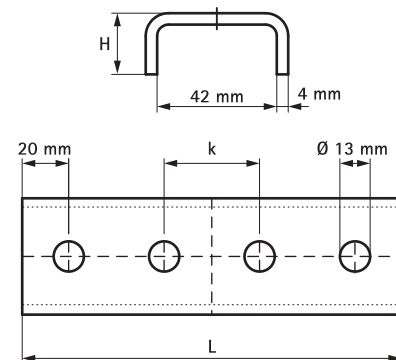
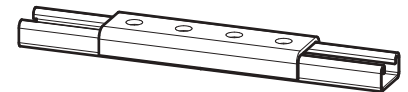
## BIS U-Shaped Connectors

to make Strut rail fabrications



### Features and Benefits

- U-shaped connector
- U-shaped for extra stability
- to make fabrication with Strut Rail
- material: steel 1.0332
- hot dip galvanized



| Part No.   | L      | H    | For Rail    | k    | Pack 1 |
|------------|--------|------|-------------|------|--------|
|            |        | (mm) |             | (mm) |        |
| 6658 1 121 | 164 mm | 25   | Strut 41x21 | 41   | 20     |
| 6658 1 122 | 191 mm | 25   | Strut 41x21 | 50   | 20     |
| 6658 1 141 | 164 mm | 45   | Strut 41x41 | 41   | 10     |

Also available in stainless steel 1.4571 (AISI-no. 316Ti).

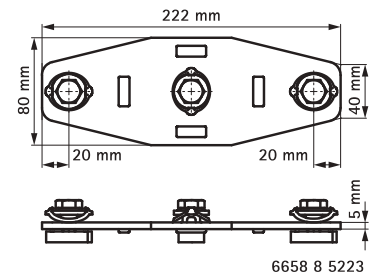
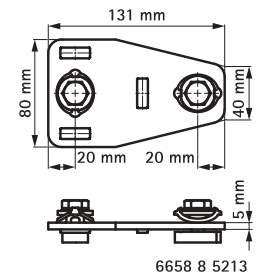
# BIS RapidStrut® Rail T- and X-Connector G2 (BUP1000)

to make Strut rail fabrications



## Features and Benefits

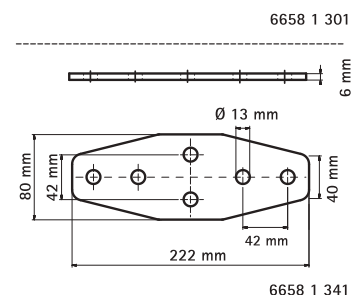
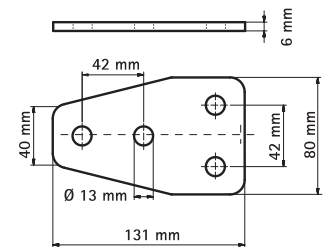
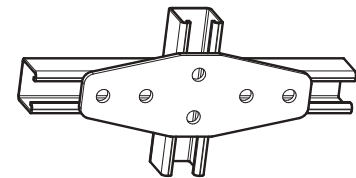
- connector with pre-assembled BIS RapidStrut® Slide nut(s)
- to make fabrication with Strut Rail
- ready-to-use pre-assembled for a quick fixing, and retains assembly in place before final tightening
- 'Direct Twist' technology for easy and secure installation
- visual guide to check the position of the slide nut
- optimized for easy installation with electrical tools
- material: metal parts made of steel 1.0332; spring(s) made of POM (polyoxymethylene), green
- surface protection:
  - product is part of the BIS UltraProtect® 1000 system
  - suitable for in- and outdoor applications
  - stands min. 1,000 hours salt spray test (max. 5% red rust) according to ISO 9227



| Part No.    | Type | For Rail | T (max.) (Nm) | Pack 1 |
|-------------|------|----------|---------------|--------|
| 6658 8 5213 | T    | Strut    | 15.0          | 20     |
| 6658 8 5223 | X    | Strut    | 15.0          | 15     |

# BIS Strut T- and X-Connector

to make Strut rail fabrications



## Features and Benefits

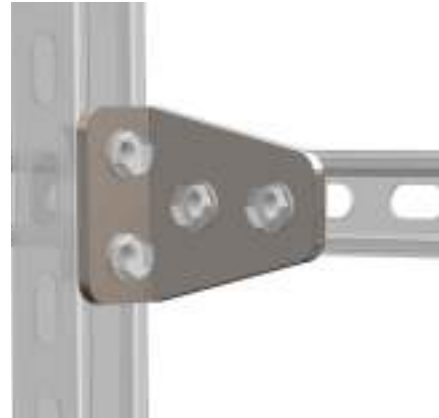
- to make fabrication with Strut Rail
- easy fitting due to rounded edges
- material: steel 1.0332
- hot dip galvanized

| Part No.   | Type | For Rail | Pack 1 |
|------------|------|----------|--------|
| 6658 1 301 | T    | Strut    | 25     |
| 6658 1 341 | X    | Strut    | 15     |

Part No. 6658 1 301 also available in stainless steel 1.4401 (AISI-no. 316).

# BIS Strut T-Connectors 135°, 90°

to make Strut rail fabrications

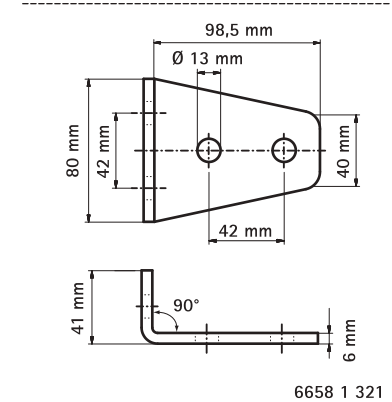
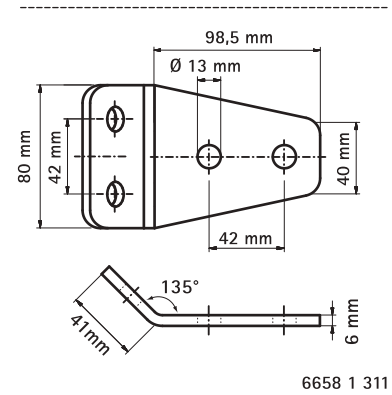


### Features and Benefits

- to make fabrication with Strut Rail
- material: steel 1.0332
- easy fitting due to rounded edges
- hot dip galvanized

| Part No.   | For Rail | a<br>(°) | Pack 1 |
|------------|----------|----------|--------|
| 6658 1 311 | Strut    | 135°     | 25     |
| 6658 1 321 | Strut    | 90°      | 25     |

Part No. 6658 1 321 also available in stainless steel 1.4571 (AISI-no. 316Ti).



Subject to modifications

# BIS Strut Z-Connectors

to make Strut rail fabrications

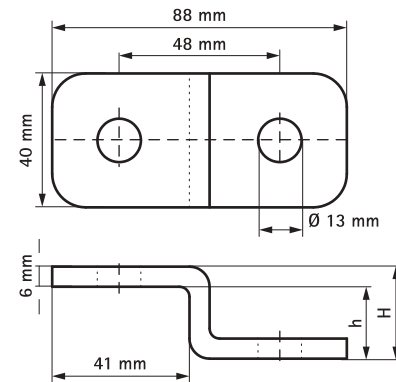
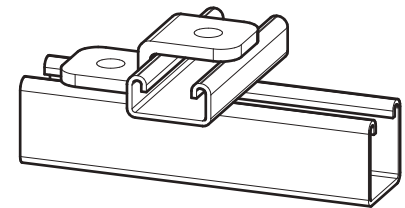


## Features and Benefits

- to make fabrication with Strut Rail
- easy fitting due to rounded edges
- material: steel 1.0332
- hot dip galvanized

| Part No.   | H (mm) | h (mm) | For Rail                   | Pack 1 |
|------------|--------|--------|----------------------------|--------|
| 6658 1 502 | 27,5   | 21,5   | Strut 41x21                | 50     |
| 6658 1 504 | 47,0   | 41,0   | Strut 41x41 + Strut 41x21D | 50     |
| 6658 1 506 | 68,0   | 62,0   | Strut 41x62                | 25     |
| 6658 1 508 | 89,0   | 83,0   | Strut 41x82 + Strut 41x41D | 25     |

Also available in stainless steel 1.4404 (AISI-no. 316L).







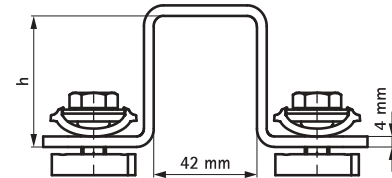
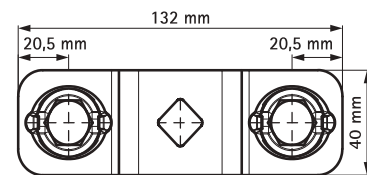
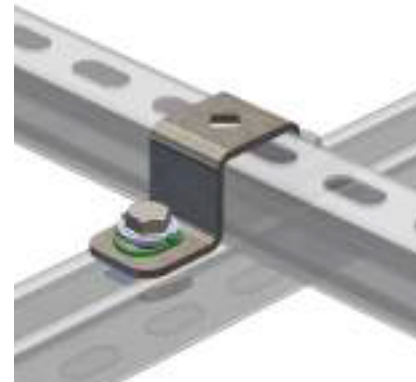
## BIS RapidStrut® Cross Connectors G2 (BUP1000)

to make Strut rail fabrications



### Features and Benefits

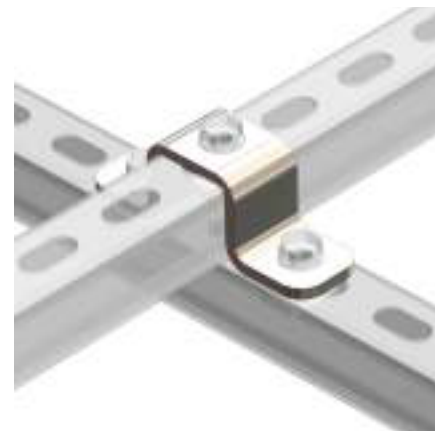
- connector with pre-assembled BIS RapidStrut® Slide nut(s)
- to make fabrication with Strut Rail
- ready-to-use pre-assembled for a quick fixing, and retains assembly in place before final tightening
- 'Direct Twist' technology for easy and secure installation
- visual guide to check the position of the slide nut
- optimized for easy installation with electrical tools
- material: metal parts made of steel 1.0332; spring(s) made of POM (polyoxymethylene), green
- surface protection:
  - product is part of the BIS UltraProtect® 1000 system
  - suitable for in- and outdoor applications
  - stands min. 1,000 hours salt spray test (max. 5% red rust) according to ISO 9227



| Part No.    | h (mm) | For Rail                           | T (max.) (Nm) | Pack 1 |
|-------------|--------|------------------------------------|---------------|--------|
| 6658 8 5402 | 20     | Strut 41x21                        | 15.0          | 25     |
| 6658 8 5404 | 40     | Strut 41x41                        | 15.0          | 25     |
| 6658 8 5405 | 50     | Strut 41x51 (BIS RapidStrut® DS 5) | 15.0          | 25     |
| 6658 8 5406 | 60     | Strut 41x62                        | 15.0          | 15     |
| 6658 8 5408 | 80     | Strut 41x82                        | 15.0          | 10     |

## BIS Strut Cross Connectors

to make Strut rail fabrications

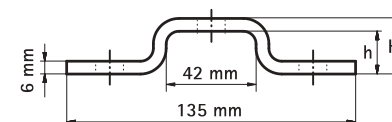
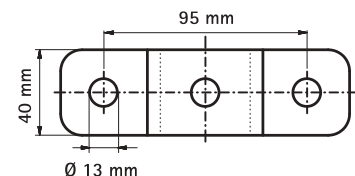


### Features and Benefits

- to make fabrication with Strut Rail
- easy fitting due to rounded edges
- material: steel 1.0332
- hot dip galvanized

| Part No.   | H (mm) | h (mm) | For Rail    | Pack 1 |
|------------|--------|--------|-------------|--------|
| 6658 1 402 | 26     | 20     | Strut 41x21 | 25     |
| 6658 1 404 | 46     | 40     | Strut 41x41 | 25     |
| 6658 1 406 | 66     | 60     | Strut 41x62 | 20     |
| 6658 1 408 | 87     | 81     | Strut 41x82 | 10     |

Also available in stainless steel 1.4404 (AISI-no. 316L).



Subject to modifications



## BIS Strut Clamps with Lining

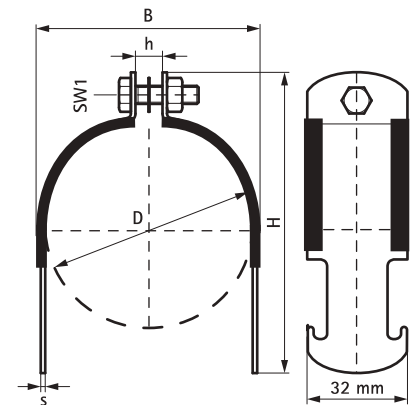
for metal pipes  $\varnothing$  85 - 315 mm



### Features and Benefits

- two-part clamp
- for direct fixing of pipes to Strut Rail
- both ends suitable for locating into Strut Rail
- material: steel 1.0226
- pre-galvanized
- noise insulating lining, EPDM rubber, black
- sound insulating lining according DIN 4109

| Part No.  | D<br>(mm) | D<br>(") | DN<br>(mm) | B<br>(mm) | H<br>(mm) | h<br>(mm) | s<br>(mm) | SW1<br>(mm) | Pack 1 |
|-----------|-----------|----------|------------|-----------|-----------|-----------|-----------|-------------|--------|
| 210 5 090 | 85 - 90   | 3        | 80         | 98        | 134       | 12        | 2,0       | 13          | 50     |
| 210 5 110 | 105 - 110 | -        | -          | 117       | 159       | 17        | 2,5       | 17          | 50     |
| 210 5 140 | 130 - 140 | 5        | 125        | 147       | 189       | 17        | 2,5       | 17          | 25     |
| 210 5 160 | 150 - 160 | -        | -          | 165       | 210       | 17        | 3,0       | 17          | 25     |
| 210 5 200 | 190 - 200 | -        | -          | 208       | 244       | 17        | 3,0       | 17          | 25     |
| 210 5 225 | 215 - 225 | 8        | 200        | 233       | 276       | 17        | 3,0       | 17          | 25     |
| 210 5 250 | 240 - 250 | -        | -          | 258       | 301       | 17        | 3,0       | 17          | 25     |
| 210 5 315 | 315       | -        | -          | 323       | 366       | 17        | 3,0       | 17          | 25     |





# BIS Strut Clamps

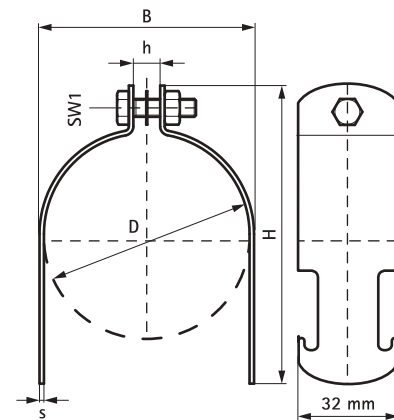
for steel pipes Ø 9 - 250 mm



### Features and Benefits

- two-part clamp
- for direct fixing of pipes to Strut Rail
- both ends suitable for locating into Strut Rail
- material: steel 1.0226
- pre-galvanized

| Part No.  | D (mm)    | D (") | DN (mm) | B (mm) | H (mm) | h (mm) | s (mm) | SW1 (mm) | Pack 1 |
|-----------|-----------|-------|---------|--------|--------|--------|--------|----------|--------|
| 200 5 010 | 9 - 10    | -     | -       | 13     | 47     | 5,0    | 1,5    | 10       | 100    |
| 200 5 012 | 10 - 12   | 1/8   | 6       | 15     | 49     | 5,0    | 1,5    | 10       | 100    |
| 200 5 014 | 12 - 14   | 1/4   | 8       | 17     | 51     | 5,0    | 1,5    | 10       | 100    |
| 200 5 016 | 14 - 16   | -     | -       | 19     | 53     | 5,0    | 1,5    | 10       | 100    |
| 200 5 018 | 16 - 18   | 3/8   | 10      | 21     | 55     | 7,5    | 1,5    | 10       | 100    |
| 200 5 022 | 20 - 22   | 1/2   | 15      | 25     | 58     | 10,0   | 1,5    | 10       | 100    |
| 200 5 026 | 22 - 26   | -     | -       | 29     | 62     | 10,0   | 1,5    | 10       | 100    |
| 200 5 030 | 26 - 30   | 3/4   | 20      | 33     | 67     | 10,0   | 1,5    | 10       | 100    |
| 200 5 035 | 30 - 35   | 1     | 25      | 38     | 72     | 10,0   | 1,5    | 10       | 100    |
| 200 5 040 | 35 - 40   | -     | -       | 43     | 77     | 10,0   | 1,5    | 10       | 100    |
| 200 5 045 | 40 - 45   | 1 1/4 | 32      | 48     | 82     | 10,0   | 1,5    | 10       | 100    |
| 200 5 050 | 45 - 50   | 1 1/2 | 40      | 54     | 88     | 10,0   | 2,0    | 13       | 100    |
| 200 5 055 | 50 - 55   | -     | -       | 59     | 93     | 10,0   | 2,0    | 13       | 100    |
| 200 5 060 | 55 - 60   | -     | -       | 64     | 98     | 10,0   | 2,0    | 13       | 100    |
| 200 5 065 | 60 - 65   | 2     | 50      | 69     | 103    | 10,0   | 2,0    | 13       | 100    |
| 200 5 070 | 65 - 70   | -     | -       | 74     | 108    | 10,0   | 2,0    | 13       | 100    |
| 200 5 075 | 70 - 75   | -     | -       | 79     | 113    | 10,0   | 2,0    | 13       | 50     |
| 200 5 080 | 75 - 80   | 2 1/2 | 65      | 84     | 118    | 10,0   | 2,0    | 13       | 50     |
| 200 5 085 | 80 - 85   | -     | -       | 89     | 123    | 10,0   | 2,0    | 13       | 50     |
| 200 5 090 | 85 - 90   | 3     | 80      | 94     | 128    | 10,0   | 2,0    | 13       | 50     |
| 200 5 095 | 90 - 95   | -     | -       | 99     | 133    | 10,0   | 2,0    | 13       | 50     |
| 200 5 100 | 95 - 100  | -     | -       | 104    | 138    | 10,0   | 2,0    | 13       | 50     |
| 200 5 105 | 100 - 105 | -     | -       | 110    | 148    | 15,0   | 2,5    | 17       | 50     |
| 200 5 110 | 105 - 110 | -     | -       | 115    | 153    | 15,0   | 2,5    | 17       | 50     |
| 200 5 120 | 110 - 120 | 4     | 100     | 125    | 163    | 15,0   | 2,5    | 17       | 50     |
| 200 5 130 | 120 - 130 | -     | -       | 135    | 173    | 15,0   | 2,5    | 17       | 25     |
| 200 5 140 | 130 - 140 | 5     | 125     | 145    | 183    | 15,0   | 2,5    | 17       | 25     |
| 200 5 150 | 140 - 150 | -     | -       | 155    | 193    | 15,0   | 2,5    | 17       | 25     |
| 200 5 160 | 150 - 160 | -     | -       | 166    | 204    | 15,0   | 3,0    | 17       | 25     |
| 200 5 170 | 160 - 170 | 6     | 150     | 176    | 214    | 15,0   | 3,0    | 17       | 25     |
| 200 5 200 | 190 - 200 | -     | -       | 206    | 244    | 15,0   | 3,0    | 17       | 25     |
| 200 5 225 | 215 - 225 | 8     | 200     | 231    | 269    | 15,0   | 3,0    | 17       | 25     |
| 200 5 250 | 240 - 250 | -     | -       | 256    | 294    | 15,0   | 3,0    | 17       | 25     |



Subject to modifications

# BIS Strut Rail Beam Clamps

to make Strut rail fabrications

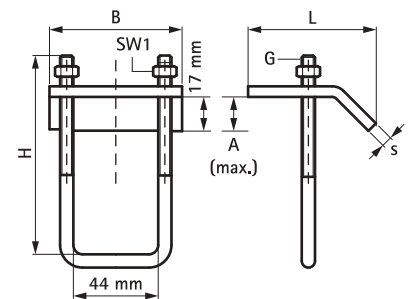
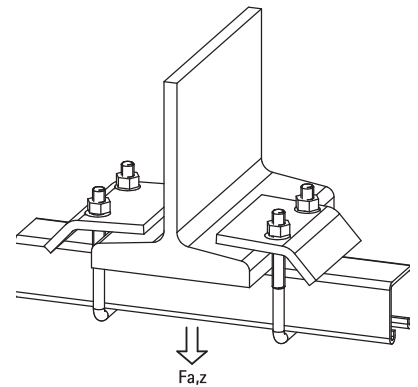


## Features and Benefits

- for a solid fixing to steel construction
- hot dip galvanized without the need for welding or drilling
- always use 2 beam clamps per fixing
- material: steel 1.0332

| Part No.   | A<br>(mm) | G   | L     | B<br>(mm) | H<br>(mm) | s<br>(mm) | For Rail                     | SW1<br>(mm) | Fa,z<br>(N) | Pack 1 |
|------------|-----------|-----|-------|-----------|-----------|-----------|------------------------------|-------------|-------------|--------|
| 6658 1 711 | 20        | M10 | 69 mm | 80        | 90        | 6.0       | Strut 41x21 + 41x41 + 41x21D | 17          | 5,700       | 25     |
| 6658 1 721 | 20        | M10 | 69 mm | 80        | 130       | 6.0       | Strut 41x62 + 41x82 + 41x41D | 17          | 5,700       | 25     |

Also available in stainless steel 1.4401 (AISI-no. 316).



# BIS Strut Beam Clamps

to make Strut rail fabrications

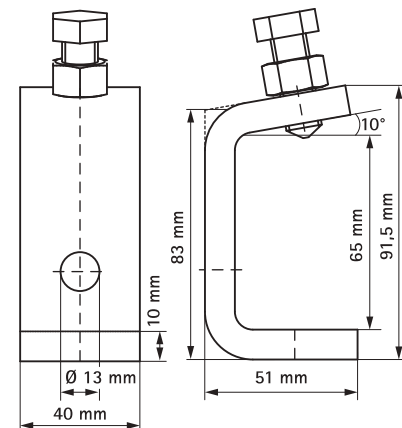
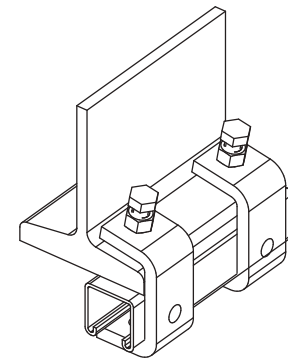


### Features and Benefits

- for a solid fixing to steel construction
- hot dip galvanized without the need for welding or drilling
- always use 2 beam clamps per fixing
- material: steel 1.0332

| Part No.   | For Rail                   | Pack 1 |
|------------|----------------------------|--------|
| 6658 1 736 | Strut 41x41 + Strut 41x21D | 25     |

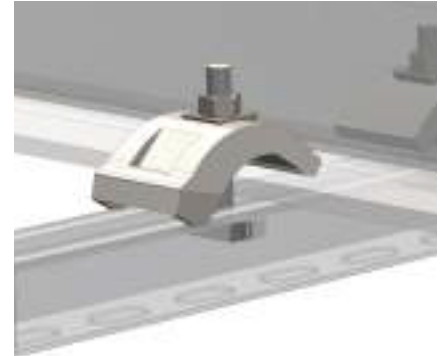
*Also available in stainless steel 1.4404 (AISI-no. 316L).*



Subject to modifications

# BIS Strut 'Heavy Duty' Beam Clamp

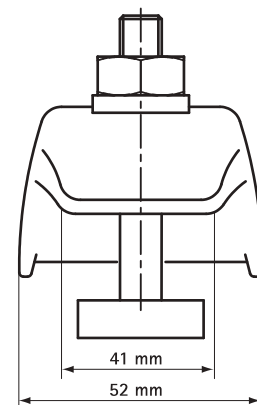
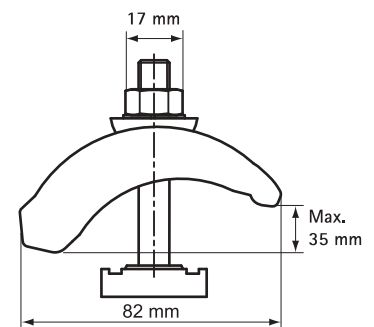
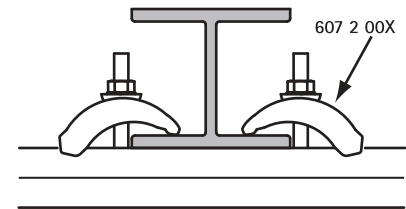
fixing to steel beam up to flange 35 mm



## Features and Benefits

- for suspension of heavy components like cable trays, duct work, etc. onto beams without welding or drilling
- up to flange thickness 35 mm
- for fixing of Strut 41x21D or Strut 41x41D to a steel beam
- material: steel
- hot dip galvanized

| Part No.  | For Rail | T (max.) (Nm) | Pack 1 |
|-----------|----------|---------------|--------|
| 607 2 002 | Strut    | 15.0          | 20     |





## BIS Strut Rail End Caps (BUP1000)

finishing of Strut Rail



### Features and Benefits

- for clean finishing of rail end, covers all burrs
- easy to fix securely
- material: PE (polyethylene), green

| Part No.  | For Rail                           | Pack 1 | Pack 2 |
|-----------|------------------------------------|--------|--------|
| 656 6 021 | Strut 41x21                        | 50     | 2.500  |
| 656 6 041 | Strut 41x41                        | 50     | 1.500  |
| 656 6 051 | Strut 41x51 (BIS RapidStrut® DS 5) | 40     | 200    |

*For profile with 62/82/164 mm insert end caps next to each other.*

## BIS Strut Rubber Strips

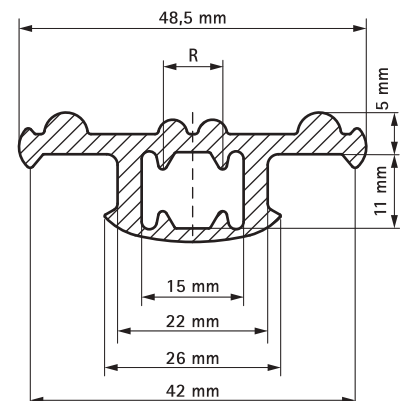
noise insulation lining for Strut rail



### Features and Benefits

- push in strip
- noise insulating lining for rail
- also usable for threaded rod M6, M8 or M10
- material: EPDM rubber, black
- sound insulating lining according DIN 4109

| Part No.  | R          | L     | For Rail | Pack 1 |
|-----------|------------|-------|----------|--------|
| 656 8 041 | 1/4 - 1/2" | 30 m  | Strut    | 30     |
| 656 8 042 | 1/4 - 1/2" | 50 mm | Strut    | 50     |



Subject to modifications

## Use of Fixing Rail Loading Tables

### Calculation method

The published safe working loads are based on tests with perforated (slotted) rail. For non perforated rail the safe working loads can be taken as 20 % higher.

Loads are calculated taking into consideration a maximum deflection ( $f$ ) of length  $1/200 \times L$  and a maximum bending stress of  $160 \text{ N/mm}^2$ .

1 N (Newton) = 0,102 kg

1 kg = 9,8 N (Newton)

### Fixing of rails to walls or ceilings

The strength of the anchoring of the rail has not been taken into consideration. The installer must verify that the bolts and wall plugs used are suitable for the maximum permitted loading of the rail.

### Methods of loading

Where loads are suspended beneath rails, the load must not exceed the relevant safe load of the slide nut. To increase rigidity of the installation we recommend the use of a U-formed washer.

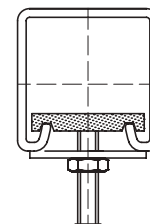
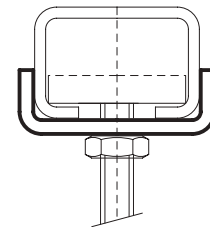
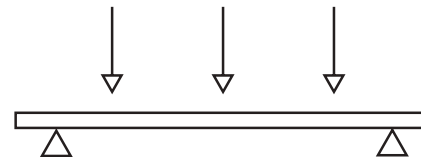
### Reading the rail loading tables

The stated values are only valid for the fixing rail. The maximum safe load of all other construction parts have to be verified. The stated maximum safe load is calculated for a static load at free bending support.

Where the segment is marked with a hyphen, the stated length cannot be safely loaded.

### Special conditions

In case of doubt or for special conditions not stated in the loading tables, please do not hesitate to contact our technical department for their advice.

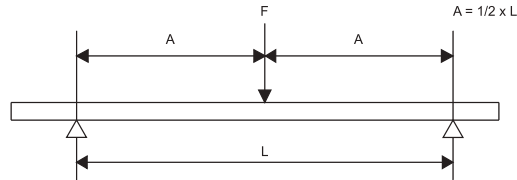






# BIS RapidStrut® Fixing Rail

Suspension on 1 point



| L<br>(mm) | BIS RapidStrut®<br>single |              |              |              |              |              |              |              | DS 5<br>41x51<br>2,0 | BIS RapidStrut®<br>double |        |        |        |
|-----------|---------------------------|--------------|--------------|--------------|--------------|--------------|--------------|--------------|----------------------|---------------------------|--------|--------|--------|
|           | WMO<br>(27 x 18)          | 41x21<br>1,5 | 41x21<br>2,5 | 41x41<br>1,5 | 41x41<br>2,0 | 41x41<br>2,5 | 41x62<br>2,5 | 41x82<br>2,5 |                      | 41x21D                    | 41x41D | 41x62D | 41x82D |
| 250       | 758                       | 1,848        | 2,381        | 5,427        | 6,556        | 7,611        | 14,730       | 23,035       | 8,812                | 7,081                     | 22,804 | 32,686 | 42,030 |
| 300       | 631                       | 1,540        | 1,984        | 4,523        | 5,463        | 6,342        | 12,275       | 19,196       | 7,343                | 5,901                     | 19,004 | 27,238 | 35,025 |
| 350       | 541                       | 1,320        | 1,701        | 3,877        | 4,683        | 5,436        | 10,522       | 16,453       | 6,294                | 5,058                     | 16,289 | 23,347 | 30,021 |
| 400       | 474                       | 1,155        | 1,488        | 3,392        | 4,098        | 4,757        | 9,206        | 14,397       | 5,507                | 4,426                     | 14,253 | 20,429 | 26,269 |
| 450       | 421                       | 1,027        | 1,323        | 3,015        | 3,642        | 4,228        | 8,183        | 12,797       | 4,895                | 3,934                     | 12,669 | 18,159 | 23,350 |
| 500       | 379                       | 924          | 1,190        | 2,714        | 3,278        | 3,805        | 7,365        | 11,517       | 4,406                | 3,540                     | 11,402 | 16,343 | 21,015 |
| 600       | 316                       | 770          | 992          | 2,261        | 2,732        | 3,171        | 6,138        | 9,598        | 3,671                | 2,950                     | 9,502  | 13,619 | 17,513 |
| 700       | 266                       | 660          | 850          | 1,938        | 2,341        | 2,718        | 5,261        | 8,227        | 3,147                | 2,529                     | 8,144  | 11,674 | 15,011 |
| 800       | 204                       | 557          | 719          | 1,696        | 2,049        | 2,378        | 4,603        | 7,198        | 2,754                | 2,213                     | 7,126  | 10,214 | 13,134 |
| 900       | 161                       | 440          | 568          | 1,508        | 1,821        | 2,114        | 4,092        | 6,399        | 2,448                | 1,967                     | 6,335  | 9,079  | 11,675 |
| 1,000     | 130                       | 356          | 460          | 1,357        | 1,639        | 1,903        | 3,683        | 5,759        | 2,203                | 1,770                     | 5,701  | 8,172  | 10,508 |
| 1,200     | 91                        | 247          | 320          | 1,131        | 1,366        | 1,586        | 3,069        | 4,799        | 1,836                | 1,475                     | 4,751  | 6,810  | 8,756  |
| 1,400     | 67                        | 182          | 235          | 969          | 1,171        | 1,359        | 2,630        | 4,113        | 1,573                | 1,264                     | 4,072  | 5,837  | 7,505  |
| 1,600     | 51                        | 139          | 180          | 794          | 952          | 1,114        | 2,302        | 3,599        | 1,377                | 1,015                     | 3,563  | 5,107  | 6,567  |
| 1,800     | 40                        | 110          | 142          | 628          | 752          | 881          | 2,046        | 3,199        | 1,224                | 802                       | 3,167  | 4,540  | 5,838  |
| 2,000     | 33                        | 89           | 115          | 508          | 609          | 713          | 1,841        | 2,879        | 1,004                | 650                       | 2,851  | -      | -      |
| 2,250     | 26                        | 70           | 91           | 402          | 481          | 564          | 1,624        | 2,559        | 794                  | 513                       | 2,534  | -      | -      |
| 2,500     | 21                        | 57           | 74           | 325          | 390          | 456          | 1,315        | 2,303        | 643                  | 416                       | 2,280  | -      | -      |
| 2,750     | 17                        | 47           | 61           | 269          | 322          | 377          | 1,087        | 2,094        | 531                  | 344                       | 2,073  | -      | -      |
| 3,000     | 14                        | 40           | 51           | 226          | 271          | 317          | 913          | 1,890        | 446                  | 289                       | 1,864  | -      | -      |
| 3,250     | 12                        | 34           | 44           | 193          | 231          | 270          | 778          | 1,611        | 380                  | 246                       | 1,588  | -      | -      |
| 3,500     | 11                        | 29           | 38           | 166          | 199          | 233          | 671          | 1,389        | 328                  | 212                       | 1,370  | -      | -      |
| 3,750     | -                         | 25           | 33           | 145          | 173          | 203          | 584          | 1,210        | 286                  | 185                       | 1,193  | -      | -      |
| 4,000     | -                         | 22           | 29           | 127          | 152          | 178          | 514          | 1,063        | 251                  | 162                       | 1,049  | -      | -      |
| 4,250     | -                         | 20           | 25           | 113          | 135          | 158          | 455          | 942          | 222                  | 144                       | 929    | -      | -      |
| 4,500     | -                         | 18           | 23           | 100          | 120          | 141          | 406          | 840          | 198                  | 128                       | 828    | -      | -      |
| 4,750     | -                         | 16           | 20           | 90           | 108          | 126          | 364          | 754          | 178                  | 115                       | 744    | -      | -      |
| 5,000     | -                         | 14           | 18           | 81           | 97           | 114          | 329          | 680          | 161                  | 104                       | 671    | -      | -      |
| 5,250     | -                         | 13           | 17           | 74           | 88           | 104          | 298          | 617          | 146                  | 94                        | 609    | -      | -      |
| 5,500     | -                         | 12           | 15           | 67           | 81           | 94           | 272          | 562          | 133                  | 86                        | 555    | -      | -      |
| 5,750     | -                         | 11           | 14           | 62           | 74           | 86           | 249          | 515          | 122                  | 79                        | 507    | -      | -      |
| 6,000     | -                         | -            | 13           | 56           | 68           | 79           | 228          | 473          | 112                  | 72                        | 466    | -      | -      |

Max. allowed load in N.

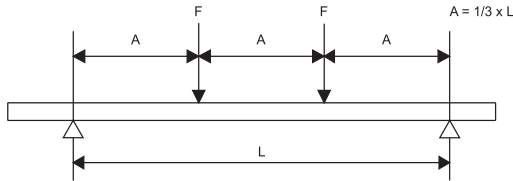
The stated values are only valid for the fixing rail.  
The maximum safe load of all other construction parts have to be verified.

Subject to modifications



# BIS RapidStrut® Fixing Rail

2 equal loads



| L<br>(mm) | BIS RapidStrut®<br>single |              |              |              |              |              |              |              | DS 5         | BIS RapidStrut®<br>double |        |        |        |
|-----------|---------------------------|--------------|--------------|--------------|--------------|--------------|--------------|--------------|--------------|---------------------------|--------|--------|--------|
|           | WMO<br>(27 x 18)          | 41x21<br>1,5 | 41x21<br>2,5 | 41x41<br>1,5 | 41x41<br>2,0 | 41x41<br>2,5 | 41x62<br>2,5 | 41x82<br>2,5 | 41x51<br>2,0 | 41x21D                    | 41x41D | 41x62D | 41x82D |
| 250       | 568                       | 1,386        | 1,786        | 4,070        | 4,917        | 5,708        | 11,048       | 17,276       | 6,609        | 5,311                     | 17,103 | 24,515 | 31,523 |
| 300       | 474                       | 1,155        | 1,488        | 3,392        | 4,098        | 4,757        | 9,206        | 14,397       | 5,507        | 4,426                     | 14,253 | 20,429 | 26,269 |
| 350       | 406                       | 990          | 1,275        | 2,907        | 3,512        | 4,077        | 7,891        | 12,340       | 4,720        | 3,793                     | 12,217 | 17,510 | 22,516 |
| 400       | 355                       | 866          | 1,116        | 2,544        | 3,073        | 3,568        | 6,905        | 10,798       | 4,130        | 3,319                     | 10,690 | 15,322 | 19,702 |
| 450       | 316                       | 770          | 992          | 2,261        | 2,732        | 3,171        | 6,138        | 9,598        | 3,671        | 2,950                     | 9,502  | 13,619 | 17,513 |
| 500       | 284                       | 693          | 893          | 2,035        | 2,459        | 2,854        | 5,524        | 8,638        | 3,304        | 2,655                     | 8,552  | 12,257 | 15,761 |
| 600       | 213                       | 578          | 744          | 1,696        | 2,049        | 2,378        | 4,603        | 7,198        | 2,754        | 2,213                     | 7,126  | 10,214 | 13,134 |
| 700       | 156                       | 427          | 552          | 1,454        | 1,756        | 2,039        | 3,946        | 6,170        | 2,360        | 1,897                     | 6,108  | 8,755  | 11,258 |
| 800       | 120                       | 327          | 422          | 1,272        | 1,537        | 1,784        | 3,452        | 5,399        | 2,065        | 1,660                     | 5,345  | 7,661  | 9,851  |
| 900       | 95                        | 258          | 334          | 1,131        | 1,366        | 1,586        | 3,069        | 4,799        | 1,836        | 1,475                     | 4,751  | 6,810  | 8,756  |
| 1.000     | 77                        | 209          | 270          | 1,018        | 1,229        | 1,427        | 2,762        | 4,319        | 1,652        | 1,328                     | 4,276  | 6,129  | 7,881  |
| 1.200     | 53                        | 145          | 188          | 829          | 993          | 1,163        | 2,302        | 3,599        | 1,377        | 1,059                     | 3,563  | 5,107  | 6,567  |
| 1.400     | 39                        | 107          | 138          | 609          | 730          | 854          | 1,973        | 3,085        | 1,180        | 778                       | 3,054  | 4,378  | 5,629  |
| 1.600     | 30                        | 82           | 106          | 466          | 559          | 654          | 1,726        | 2,699        | 921          | 596                       | 2,672  | 3,830  | 4,925  |
| 1.800     | 24                        | 65           | 83           | 368          | 442          | 517          | 1,489        | 2,399        | 728          | 471                       | 2,375  | 3,405  | 4,378  |
| 2.000     | 19                        | 52           | 68           | 298          | 358          | 419          | 1,206        | 2,160        | 590          | 381                       | 2,138  | -      | -      |
| 2.250     | 15                        | 41           | 53           | 236          | 283          | 331          | 953          | 1,920        | 466          | 301                       | 1,900  | -      | -      |
| 2.500     | 12                        | 33           | 43           | 191          | 229          | 268          | 772          | 1,598        | 377          | 244                       | 1,576  | -      | -      |
| 2.750     | 10                        | 28           | 36           | 158          | 189          | 221          | 638          | 1,320        | 312          | 202                       | 1,302  | -      | -      |
| 3.000     | -                         | 23           | 30           | 133          | 159          | 186          | 536          | 1,109        | 262          | 169                       | 1,094  | -      | -      |
| 3.250     | -                         | 20           | 26           | 113          | 135          | 159          | 457          | 945          | 223          | 144                       | 932    | -      | -      |
| 3.500     | -                         | 17           | 22           | 97           | 117          | 137          | 394          | 815          | 192          | 124                       | 804    | -      | -      |
| 3.750     | -                         | 15           | 19           | 85           | 102          | 119          | 343          | 710          | 168          | 108                       | 700    | -      | -      |
| 4.000     | -                         | 13           | 17           | 75           | 89           | 105          | 302          | 624          | 147          | 95                        | 615    | -      | -      |
| 4.250     | -                         | 12           | 15           | 66           | 79           | 93           | 267          | 553          | 131          | 84                        | 545    | -      | -      |
| 4.500     | -                         | 10           | 13           | 59           | 71           | 83           | 238          | 493          | 116          | 75                        | 486    | -      | -      |
| 4.750     | -                         | -            | 12           | 53           | 63           | 74           | 214          | 443          | 105          | 68                        | 436    | -      | -      |
| 5.000     | -                         | -            | 11           | 48           | 57           | 67           | 193          | 399          | 94           | 61                        | 394    | -      | -      |
| 5.250     | -                         | -            | -            | 43           | 52           | 61           | 175          | 362          | 86           | 55                        | 357    | -      | -      |
| 5.500     | -                         | -            | -            | 39           | 47           | 55           | 159          | 330          | 78           | 50                        | 326    | -      | -      |
| 5.750     | -                         | -            | -            | 36           | 43           | 51           | 146          | 302          | 71           | 46                        | 298    | -      | -      |
| 6.000     | -                         | -            | -            | 33           | 40           | 47           | 134          | 277          | 66           | 42                        | 274    | -      | -      |

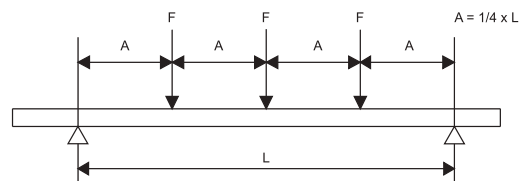
Max. allowed load in N. per suspension point (F).

The stated values are only valid for the fixing rail.

The maximum safe load of all other construction parts have to be verified.

## BIS RapidStrut® Fixing Rail

3 equal loads



| L<br>(mm) | BIS RapidStrut®<br>single |              |              |              |              |              |              |              | DS 5<br>41x51<br>2,0 | BIS RapidStrut®<br>double |        |        |        |
|-----------|---------------------------|--------------|--------------|--------------|--------------|--------------|--------------|--------------|----------------------|---------------------------|--------|--------|--------|
|           | WMO<br>(27 x 18)          | 41x21<br>1,5 | 41x21<br>2,5 | 41x41<br>1,5 | 41x41<br>2,0 | 41x41<br>2,5 | 41x62<br>2,5 | 41x82<br>2,5 |                      | 41x21D                    | 41x41D | 41x62D | 41x82D |
| 250       | 379                       | 924          | 1,190        | 2,714        | 3,278        | 3,805        | 7,365        | 11,517       | 4406                 | 3,540                     | 11,402 | 16,343 | 21,015 |
| 300       | 316                       | 770          | 992          | 2,261        | 2,732        | 3,171        | 6,138        | 9,598        | 3671                 | 2,950                     | 9,502  | 13,619 | 17,513 |
| 350       | 271                       | 660          | 850          | 1,938        | 2,341        | 2,718        | 5,261        | 8,227        | 3147                 | 2,529                     | 8,144  | 11,674 | 15,011 |
| 400       | 237                       | 578          | 744          | 1,696        | 2,049        | 2,378        | 4,603        | 7,198        | 2754                 | 2,213                     | 7,126  | 10,214 | 13,134 |
| 450       | 210                       | 513          | 661          | 1,508        | 1,821        | 2,114        | 4,092        | 6,399        | 2448                 | 1,967                     | 6,335  | 9,079  | 11,675 |
| 500       | 189                       | 462          | 595          | 1,357        | 1,639        | 1,903        | 3,683        | 5,759        | 2203                 | 1,770                     | 5,701  | 8,172  | 10,508 |
| 600       | 153                       | 385          | 496          | 1,131        | 1,366        | 1,586        | 3,069        | 4,799        | 1836                 | 1,475                     | 4,751  | 6,810  | 8,756  |
| 700       | 112                       | 306          | 396          | 969          | 1,171        | 1,359        | 2,630        | 4,113        | 1573                 | 1,264                     | 4,072  | 5,837  | 7,505  |
| 800       | 86                        | 234          | 303          | 848          | 1,024        | 1,189        | 2,302        | 3,599        | 1377                 | 1,106                     | 3,563  | 5,107  | 6,567  |
| 900       | 68                        | 185          | 239          | 754          | 911          | 1,057        | 2,046        | 3,199        | 1224                 | 983                       | 3,167  | 4,540  | 5,838  |
| 1,000     | 55                        | 150          | 194          | 678          | 820          | 951          | 1,841        | 2,879        | 1101                 | 885                       | 2,851  | 4,086  | 5,254  |
| 1,200     | 38                        | 104          | 135          | 565          | 683          | 793          | 1,534        | 2,399        | 918                  | 738                       | 2,375  | 3,405  | 4,378  |
| 1,400     | 28                        | 77           | 99           | 437          | 524          | 613          | 1,315        | 2,057        | 787                  | 558                       | 2,036  | 2,918  | 3,753  |
| 1,600     | 21                        | 59           | 76           | 335          | 401          | 469          | 1,151        | 1,800        | 661                  | 427                       | 1,782  | 2,554  | 3,284  |
| 1,800     | 17                        | 46           | 60           | 264          | 317          | 371          | 1,023        | 1,600        | 522                  | 338                       | 1,584  | 2,270  | 2,919  |
| 2,000     | 14                        | 38           | 48           | 214          | 257          | 300          | 865          | 1,440        | 423                  | 274                       | 1,425  | -      | -      |
| 2,250     | 11                        | 30           | 38           | 169          | 203          | 237          | 684          | 1,280        | 334                  | 216                       | 1,267  | -      | -      |
| 2,500     | -                         | 24           | 31           | 137          | 164          | 192          | 554          | 1,146        | 271                  | 175                       | 1,130  | -      | -      |
| 2,750     | -                         | 20           | 26           | 113          | 136          | 159          | 458          | 947          | 224                  | 145                       | 934    | -      | -      |
| 3,000     | -                         | 17           | 22           | 95           | 114          | 133          | 385          | 796          | 188                  | 122                       | 785    | -      | -      |
| 3,250     | -                         | 14           | 18           | 81           | 97           | 114          | 328          | 678          | 160                  | 104                       | 669    | -      | -      |
| 3,500     | -                         | 12           | 16           | 70           | 84           | 98           | 283          | 585          | 138                  | 89                        | 577    | -      | -      |
| 3,750     | -                         | 11           | 14           | 61           | 73           | 85           | 246          | 509          | 120                  | 78                        | 502    | -      | -      |
| 4,000     | -                         | -            | 12           | 54           | 64           | 75           | 216          | 448          | 106                  | 68                        | 441    | -      | -      |
| 4,250     | -                         | -            | 11           | 47           | 57           | 67           | 192          | 397          | 94                   | 61                        | 391    | -      | -      |
| 4,500     | -                         | -            | -            | 42           | 51           | 59           | 171          | 354          | 84                   | 54                        | 349    | -      | -      |
| 4,750     | -                         | -            | -            | 38           | 45           | 53           | 153          | 317          | 75                   | 48                        | 313    | -      | -      |
| 5,000     | -                         | -            | -            | 34           | 41           | 48           | 138          | 287          | 68                   | 44                        | 283    | -      | -      |
| 5,250     | -                         | -            | -            | 31           | 37           | 44           | 126          | 260          | 61                   | 40                        | 256    | -      | -      |
| 5,500     | -                         | -            | -            | 28           | 34           | 40           | 114          | 237          | 56                   | 36                        | 234    | -      | -      |
| 5,750     | -                         | -            | -            | 26           | 31           | 36           | 105          | 217          | 51                   | 33                        | 214    | -      | -      |
| 6,000     | -                         | -            | -            | 24           | 29           | 33           | 96           | 199          | 47                   | 30                        | 196    | -      | -      |

Max. allowed load in N. per suspension point (F).

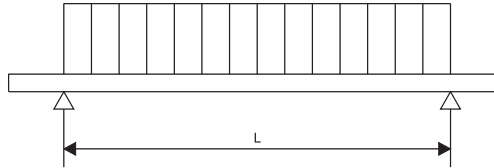
The stated values are only valid for the fixing rail.  
The maximum safe load of all other construction parts have to be verified.

Subject to modifications



# BIS RapidStrut® Fixing Rail

Uniformly distributed load



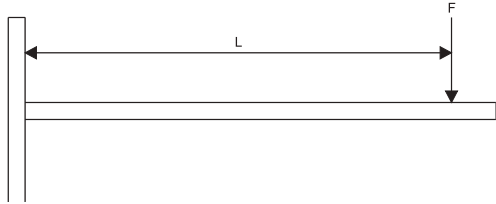
| L<br>(mm) | BIS RapidStrut®<br>single |              |              |              |              |              |              |              | DS 5<br>41x51<br>2,0 | BIS RapidStrut®<br>double |        |        |        |
|-----------|---------------------------|--------------|--------------|--------------|--------------|--------------|--------------|--------------|----------------------|---------------------------|--------|--------|--------|
|           | WMO<br>(27 x 18)          | 41x21<br>1,5 | 41x21<br>2,5 | 41x41<br>1,5 | 41x41<br>2,0 | 41x41<br>2,5 | 41x62<br>2,5 | 41x82<br>2,5 |                      | 41x21D                    | 41x41D | 41x62D | 41x82D |
| 250       | 1.516                     | 3.697        | 4.762        | 10.854       | 13.112       | 15.222       | 29.460       | 46.070       | 17.623               | 14.162                    | 45.609 | 65.372 | 84.060 |
| 300       | 1.263                     | 3.081        | 3.968        | 9.045        | 10.927       | 12.685       | 24.550       | 38.391       | 14.686               | 11.802                    | 38.007 | 54.477 | 70.050 |
| 350       | 1.083                     | 2.640        | 3.401        | 7.753        | 9.366        | 10.873       | 21.043       | 32.907       | 12.588               | 10.116                    | 32.578 | 46.694 | 60.043 |
| 400       | 947                       | 2.310        | 2.976        | 6.784        | 8.195        | 9.514        | 18.413       | 28.794       | 11.014               | 8.851                     | 28.506 | 40.858 | 52.538 |
| 450       | 842                       | 2.054        | 2.645        | 6.030        | 7.285        | 8.457        | 16.367       | 25.594       | 9.791                | 7.868                     | 25.338 | 36.318 | 46.700 |
| 500       | 758                       | 1.848        | 2.381        | 5.427        | 6.556        | 7.611        | 14.730       | 23.035       | 8.812                | 7.081                     | 22.804 | 32.686 | 42.030 |
| 600       | 580                       | 1.540        | 1.984        | 4.523        | 5.463        | 6.342        | 12.275       | 19.196       | 7.343                | 5.901                     | 19.004 | 27.238 | 35.025 |
| 700       | 426                       | 1.163        | 1.503        | 3.877        | 4.683        | 5.436        | 10.522       | 16.453       | 6.294                | 5.058                     | 16.289 | 23.347 | 30.021 |
| 800       | 326                       | 891          | 1.151        | 3.392        | 4.098        | 4.757        | 9.206        | 14.397       | 5.507                | 4.426                     | 14.253 | 20.429 | 26.269 |
| 900       | 258                       | 704          | 909          | 3.015        | 3.642        | 4.228        | 8.183        | 12.797       | 4.895                | 3.934                     | 12.669 | 18.159 | 23.350 |
| 1.000     | 209                       | 570          | 737          | 2.714        | 3.278        | 3.805        | 7.365        | 11.517       | 4.406                | 3.540                     | 11.402 | 16.343 | 21.015 |
| 1.200     | 145                       | 396          | 512          | 2.260        | 2.708        | 3.170        | 6.138        | 9.598        | 3.671                | 2.887                     | 9.502  | 13.619 | 17.513 |
| 1.400     | 106                       | 291          | 376          | 1.660        | 1.989        | 2.329        | 5.261        | 8.227        | 3.147                | 2.121                     | 8.144  | 11.674 | 15.011 |
| 1.600     | 82                        | 223          | 288          | 1.271        | 1.523        | 1.783        | 4.603        | 7.198        | 2.511                | 1.624                     | 7.126  | 10.214 | 13.134 |
| 1.800     | 64                        | 176          | 227          | 1.004        | 1.204        | 1.409        | 4.059        | 6.399        | 1.984                | 1.283                     | 6.335  | 9.079  | 11.675 |
| 2.000     | 52                        | 143          | 184          | 814          | 975          | 1.141        | 3.288        | 5.759        | 1.607                | 1.039                     | 5.701  | -      | -      |
| 2.250     | 41                        | 113          | 146          | 643          | 770          | 902          | 2.598        | 5.119        | 1.270                | 821                       | 5.068  | -      | -      |
| 2.500     | 33                        | 91           | 118          | 521          | 624          | 730          | 2.104        | 4.355        | 1.028                | 665                       | 4.295  | -      | -      |
| 2.750     | 28                        | 75           | 97           | 430          | 516          | 604          | 1.739        | 3.599        | 850                  | 550                       | 3.549  | -      | -      |
| 3.000     | 23                        | 63           | 82           | 362          | 433          | 507          | 1.461        | 3.024        | 714                  | 462                       | 2.983  | -      | -      |
| 3.250     | 20                        | 54           | 70           | 308          | 369          | 432          | 1.245        | 2.577        | 609                  | 394                       | 2.541  | -      | -      |
| 3.500     | 17                        | 47           | 60           | 266          | 318          | 373          | 1.074        | 2.222        | 525                  | 339                       | 2.191  | -      | -      |
| 3.750     | 15                        | 41           | 52           | 231          | 277          | 325          | 935          | 1.936        | 457                  | 296                       | 1.909  | -      | -      |
| 4.000     | 13                        | 36           | 46           | 203          | 244          | 285          | 822          | 1.701        | 402                  | 260                       | 1.678  | -      | -      |
| 4.250     | 12                        | 32           | 41           | 180          | 216          | 253          | 728          | 1.507        | 356                  | 230                       | 1.486  | -      | -      |
| 4.500     | 10                        | 28           | 36           | 161          | 193          | 225          | 649          | 1.344        | 317                  | 205                       | 1.326  | -      | -      |
| 4.750     | -                         | 25           | 33           | 144          | 173          | 202          | 583          | 1.206        | 285                  | 184                       | 1.190  | -      | -      |
| 5.000     | -                         | 23           | 29           | 130          | 156          | 183          | 526          | 1.089        | 257                  | 166                       | 1.074  | -      | -      |
| 5.250     | -                         | 21           | 27           | 118          | 141          | 166          | 477          | 988          | 233                  | 151                       | 974    | -      | -      |
| 5.500     | -                         | 19           | 24           | 108          | 129          | 151          | 435          | 900          | 212                  | 137                       | 887    | -      | -      |
| 5.750     | -                         | 17           | 22           | 98           | 118          | 138          | 398          | 823          | 194                  | 126                       | 812    | -      | -      |
| 6.000     | -                         | 16           | 20           | 90           | 108          | 127          | 365          | 756          | 179                  | 115                       | 746    | -      | -      |

Max. allowed load in N.

The stated values are only valid for the fixing rail.  
The maximum safe load of all other construction parts have to be verified.

# BIS RapidStrut® Cantilever Arms

Suspension on 1 point



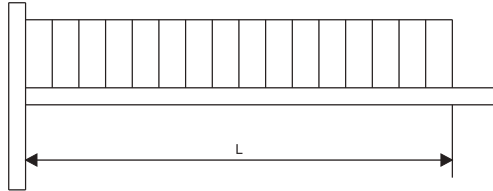
| L<br>(mm) | BIS RapidStrut®<br>single |              |              |              |              |              |              |              | DS 5<br>41x51<br>2,0 | BIS RapidStrut®<br>double |        |        |        |
|-----------|---------------------------|--------------|--------------|--------------|--------------|--------------|--------------|--------------|----------------------|---------------------------|--------|--------|--------|
|           | WM0<br>(27 x 18)          | 41x21<br>1,5 | 41x21<br>2,5 | 41x41<br>1,5 | 41x41<br>2,0 | 41x41<br>2,5 | 41x62<br>2,5 | 41x82<br>2,5 |                      | 41x21D                    | 41x41D | 41x62D | 41x82D |
| 100       | 474                       | 1,155        | 1,488        | 3,392        | 4,098        | 4,757        | 9,206        | 14,397       | 5,507                | 4,426                     | 14,253 | 20,429 | 26,269 |
| 150       | 316                       | 770          | 992          | 2,261        | 2,732        | 3,171        | 6,138        | 9,598        | 3,671                | 2,950                     | 9,502  | 13,619 | 17,513 |
| 200       | 204                       | 557          | 719          | 1,696        | 2,049        | 2,378        | 4,603        | 7,198        | 2,754                | 2,213                     | 7,126  | 10,214 | 13,134 |
| 250       | 130                       | 356          | 460          | 1,357        | 1,639        | 1,903        | 3,683        | 5,759        | 2,203                | 1,770                     | 5,701  | 8,172  | 10,508 |
| 300       | 91                        | 247          | 320          | 1,131        | 1,366        | 1,586        | 3,069        | 4,799        | 1,836                | 1,475                     | 4,751  | 6,810  | 8,756  |
| 350       | 67                        | 182          | 235          | 969          | 1,171        | 1,359        | 2,630        | 4,113        | 1,573                | 1,264                     | 4,072  | 5,837  | 7,505  |
| 400       | 51                        | 139          | 180          | 794          | 952          | 1,114        | 2,302        | 3,599        | 1,377                | 1,015                     | 3,563  | 5,107  | 6,567  |
| 450       | 40                        | 110          | 142          | 628          | 752          | 881          | 2,046        | 3,199        | 1,224                | 802                       | 3,167  | 4,540  | 5,838  |
| 500       | 33                        | 89           | 115          | 508          | 609          | 713          | 1,841        | 2,879        | 1,004                | 650                       | 2,851  | 4,086  | 5,254  |
| 550       | 27                        | 74           | 95           | 420          | 504          | 589          | 1,674        | 2,618        | 830                  | 537                       | 2,591  | 3,714  | 4,776  |
| 600       | 23                        | 62           | 80           | 353          | 423          | 495          | 1,427        | 2,399        | 697                  | 451                       | 2,375  | 3,405  | 4,378  |
| 700       | 17                        | 45           | 59           | 259          | 311          | 364          | 1,048        | 2,057        | 512                  | 331                       | 2,036  | 2,918  | 3,753  |
| 800       | 13                        | 35           | 45           | 199          | 238          | 279          | 803          | 1,661        | 392                  | 254                       | 1,638  | 2,554  | 3,284  |
| 900       | 10                        | 27           | 36           | 157          | 188          | 220          | 634          | 1,313        | 310                  | 200                       | 1,295  | 2,270  | 2,919  |
| 1.000     | -                         | 22           | 29           | 127          | 152          | 178          | 514          | 1,063        | 251                  | 162                       | 1,049  | 2,043  | 2,627  |
| 1.100     | -                         | 18           | 24           | 105          | 126          | 147          | 425          | 879          | 208                  | 134                       | 867    | 1,857  | 2,388  |
| 1.200     | -                         | 15           | 20           | 88           | 106          | 124          | 357          | 738          | 174                  | 113                       | 728    | 1,702  | 2,189  |
| 1.300     | -                         | 13           | 17           | 75           | 90           | 106          | 304          | 629          | 149                  | 96                        | 620    | 1,571  | 2,021  |
| 1.400     | -                         | 11           | 15           | 65           | 78           | 91           | 262          | 542          | 128                  | 83                        | 535    | 1,459  | 1,876  |
| 1.500     | -                         | -            | 13           | 56           | 68           | 79           | 228          | 473          | 112                  | 72                        | 466    | 1,362  | 1,751  |

Max. allowed load in N.  
 The stated values are only valid for the fixing rail.  
 The maximum safe load of all other construction parts have to be verified.

Subject to modifications

# BIS RapidStrut® Cantilever Arms

Uniformly distributed load



| L<br>(mm) | BIS RapidStrut®<br>single |              |              |              |              |              |              |              | DS 5<br>41x51<br>2,0 | BIS RapidStrut®<br>double |        |        |        |
|-----------|---------------------------|--------------|--------------|--------------|--------------|--------------|--------------|--------------|----------------------|---------------------------|--------|--------|--------|
|           | WM0<br>(27 x 18)          | 41x21<br>1,5 | 41x21<br>2,5 | 41x41<br>1,5 | 41x41<br>2,0 | 41x41<br>2,5 | 41x62<br>2,5 | 41x82<br>2,5 |                      | 41x21D                    | 41x41D | 41x61D | 41x81D |
| 100       | 947                       | 2,310        | 2,976        | 6,784        | 8,195        | 9,514        | 18,413       | 28,794       | 11,014               | 8,851                     | 28,506 | 40,858 | 52,538 |
| 150       | 631                       | 1,540        | 1,984        | 4,523        | 5,463        | 6,342        | 12,275       | 19,196       | 7,343                | 5,901                     | 19,004 | 27,238 | 35,025 |
| 200       | 474                       | 1,155        | 1,488        | 3,392        | 4,098        | 4,757        | 9,206        | 14,397       | 5,507                | 4,426                     | 14,253 | 20,429 | 26,269 |
| 250       | 348                       | 924          | 1,190        | 2,714        | 3,278        | 3,805        | 7,365        | 11,517       | 4,406                | 3,540                     | 11,402 | 16,343 | 21,015 |
| 300       | 242                       | 660          | 853          | 2,261        | 2,732        | 3,171        | 6,138        | 9,598        | 3,671                | 2,950                     | 9,502  | 13,619 | 17,513 |
| 350       | 177                       | 485          | 626          | 1,938        | 2,341        | 2,718        | 5,261        | 8,227        | 3,147                | 2,529                     | 8,144  | 11,674 | 15,011 |
| 400       | 136                       | 371          | 480          | 1,696        | 2,049        | 2,378        | 4,603        | 7,198        | 2,754                | 2,213                     | 7,126  | 10,214 | 13,134 |
| 450       | 107                       | 293          | 379          | 1,508        | 1,821        | 2,114        | 4,092        | 6,399        | 2,448                | 1,967                     | 6,335  | 9,079  | 11,675 |
| 500       | 87                        | 238          | 307          | 1,356        | 1,625        | 1,902        | 3,683        | 5,759        | 2,203                | 1,732                     | 5,701  | 8,172  | 10,508 |
| 550       | 72                        | 196          | 254          | 1,121        | 1,343        | 1,572        | 3,348        | 5,235        | 2,003                | 1,432                     | 5,183  | 7,429  | 9,552  |
| 600       | 60                        | 165          | 213          | 942          | 1,128        | 1,321        | 3,069        | 4,799        | 1,836                | 1,203                     | 4,751  | 6,810  | 8,756  |
| 700       | 44                        | 121          | 157          | 692          | 829          | 970          | 2,630        | 4,113        | 1,367                | 884                       | 4,072  | 5,837  | 7,505  |
| 800       | 34                        | 93           | 120          | 530          | 635          | 743          | 2,140        | 3,599        | 1,046                | 677                       | 3,563  | 5,107  | 6,567  |
| 900       | 27                        | 73           | 95           | 418          | 501          | 587          | 1,691        | 3,199        | 827                  | 535                       | 3,167  | 4,540  | 5,838  |
| 1.000     | 22                        | 59           | 77           | 339          | 406          | 476          | 1,370        | 2,835        | 670                  | 433                       | 2,796  | 4,086  | 5,254  |
| 1.100     | 18                        | 49           | 63           | 280          | 336          | 393          | 1,132        | 2,343        | 553                  | 358                       | 2,311  | 3,714  | 4,776  |
| 1.200     | 15                        | 41           | 53           | 235          | 282          | 330          | 951          | 1,969        | 465                  | 301                       | 1,942  | 3,405  | 4,378  |
| 1.300     | 13                        | 35           | 45           | 201          | 240          | 281          | 811          | 1,678        | 396                  | 256                       | 1,655  | 3,143  | 4,041  |
| 1.400     | 11                        | 30           | 39           | 173          | 207          | 243          | 699          | 1,447        | 342                  | 221                       | 1,427  | 2,918  | 3,753  |
| 1.500     | -                         | 26           | 34           | 151          | 181          | 211          | 609          | 1,260        | 298                  | 192                       | 1,243  | 2,724  | 3,503  |

Max. allowed load in N.

The stated values are only valid for the fixing rail.  
The maximum safe load of all other construction parts have to be verified.