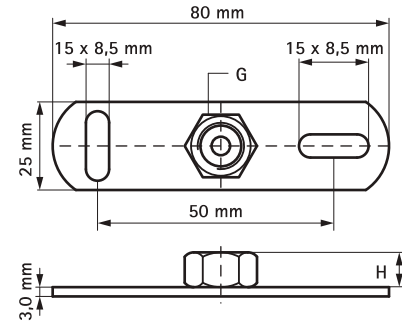




BIS Wall Plates 670

fixing to wall or ceiling



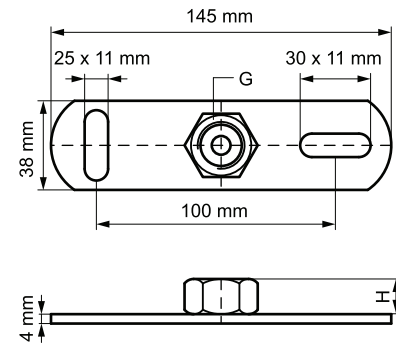
Features and Benefits

- slots at 90° to each other to simplify fixing
- zinc plated
- with resistance welded connection nut
- material: steel

Part No.	G	H (mm)	Fa,z (N)	Pack 1	Pack 2
670 3 006	M6	6	2,500	50	250
670 3 008	M8	8	2,500	50	250
670 3 009	M8/10	18	2,500	50	250
670 3 010	M10	10	2,500	50	250
670 3 012	M12	12	2,500	50	250
670 3 016	M16	13	2,500	50	250
670 3 021	G½"	15	2,500	50	250

BIS Wall Plates 671 and 675

fixing to wall or ceiling



Features and Benefits

- slots at 90° to each other to simplify fixing
- Part No. 671 9 OXX: with CO₂ welded connection nut
- material: steel
- Part No. 671 3 OXX: with resistance welded connection nut
- zinc plated

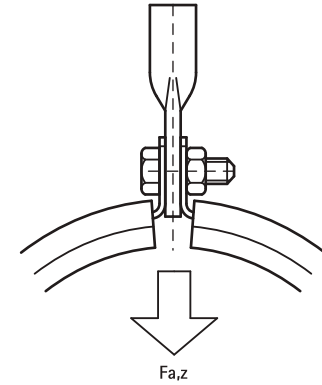
Part No.	Type	G	H (mm)	Fa,z (N)	Pack 1
671 3 008	671	M8	8	3.800	40
671 3 010	671	M10	10	3.800	40
671 3 012	671	M12	10	3.800	40
671 3 016	671	M16	13	3.800	50
671 3 021	671	G½"	15	3.800	50
671 9 012	675	M12	14	6.000	50
671 9 016	675	M16	17	6.000	50
671 9 021	675	G½"	19	6.000	50
671 9 027	675	G¾"	22	6.000	50
671 9 033	675	G1"	24	6.000	50

Subject to modifications

BIS Suspension Eyes

to make a suspension point

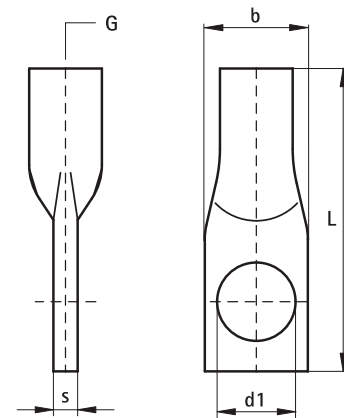
680



Features and Benefits

- closed design to maximize loading
- zinc plated
- material: steel

Part No.	G	L	b x s (mm)	d1 (mm)	Fa,z (N)	Pack 1	Pack 2
680 3 008	M8	45 mm	13,5 x 3,5	Ø 8.5	2.580	100	500
680 3 010	M10	50 mm	17,0 x 4,0	Ø 10.5	3.540	100	500
680 3 012	M12	55 mm	20,5 x 5,5	Ø 10.5	7.750	100	500



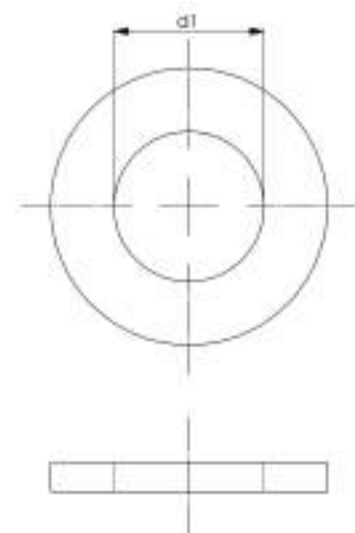
Flat Washer



Features and Benefits

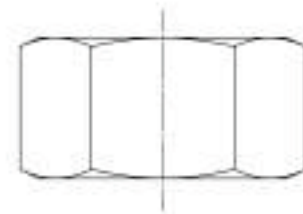
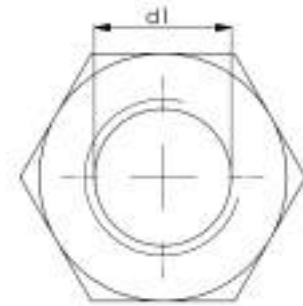
- material: steel
- zinc plated

Part No.	d1 (mm)
DMC3 3 206	6
DMC3 3 208	8
DMC3 3 210	10
DMC3 3 212	12
DMC3 3 216	16
DMC3 3 218	18
DMC3 3 220	20
DMC3 3 222	22
DMC3 3 224	24



Hot Dip Galvanized and Stainless Steel option available on request.

Hex Nut

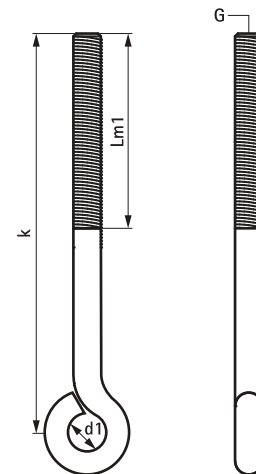


Features and Benefits

- material: steel
- zinc plated

Part No.	G
DMC3 3 106	M6
DMC3 3 108	M8
DMC3 3 110	M10
DMC3 3 112	M12
DMC3 3 116	M16
DMC3 3 118	M18
DMC3 3 120	M20
DMC3 3 122	M22
DMC3 3 124	M24

Hardware Eye Rod



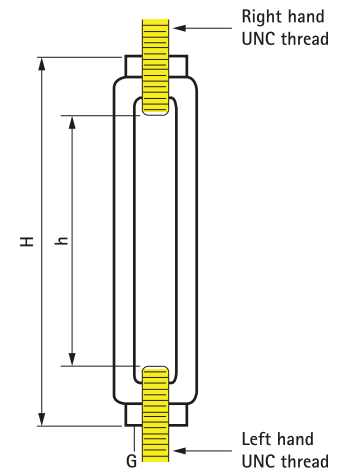
Features and Benefits

- structural attachment as a hanger rod
- electrogalvanized as per ASTM B 633 Standards (SC3), BS 1706 FE/ZN 12

Part No.	G	d1 (mm)	Lm1 (mm)	k (mm)	Fa,z (N)
DM C43 2 100	M10	22	65	100	1,000
DM C43 2 150	M10	22	65	150	1,000
DM C43 2 200	M10	22	65	200	1,000

Subject to modifications

Hardware Turn Buckle

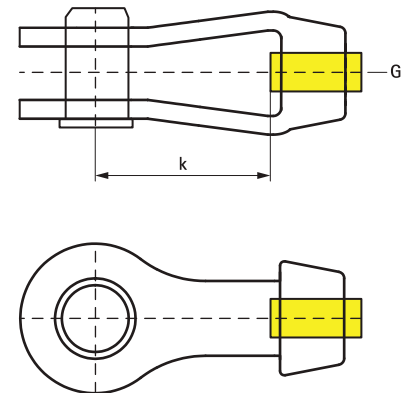


Features and Benefits

- used to provide vertical adjustment up to 140 mm
- ends are threaded in opposite directions
- designed to meet MSS Standard SP-58, type 13

Part No.	G	H (mm)	h (mm)	Fa,z (N)
DMC4 3 010	M10	180	145	5,000
DMC4 3 012	M12	190	145	10,000
DMC4 3 016	M16	200	140	16,000
DMC4 3 020	M20	210	140	25,000
DMC4 3 022	M22	220	140	32,500

Hardware Forged Clevis



Features and Benefits

- used to attach to vertical plates that have been welded to structure or pipe
- designed to meet MSS Standard SP-58, type 14

Part No.	G	k (mm)	Fa,z (N)
DMC4 3 110	M10	90	2,500
DMC4 3 112	M12	90	5,000
DMC4 3 116	M16	90	8,000
DMC4 3 120	M20	100	12,000
DMC4 3 122	M22	100	17,000
DMC4 3 125	M25	125	22,000
DMC4 3 132	M32	125	36,000
DMC4 3 138	M38	150	50,000
DMC4 3 145	M45	150	70,000
DMC4 3 160	M60	175	90,000

Subject to modifications

BIS Threaded Rods

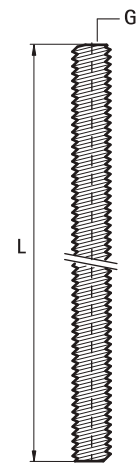
fixing to rail, wall plates, etc.



Features and Benefits

- according to DIN 976-1
- material: steel
- zinc plated
- tested for fire safety

Part No.	Type	G	L	BndS
630 3 006	DIN 976-1	M6	1 m	100
630 3 206	DIN 976-1	M6	2 m	50
630 3 306	DIN 976-1	M6	3 m	50
630 3 008	DIN 976-1	M8	1 m	50
630 3 208	DIN 976-1	M8	2 m	25
630 3 308	DIN 976-1	M8	3 m	25
630 3 010	DIN 976-1	M10	1 m	25
630 3 210	DIN 976-1	M10	2 m	20
630 3 310	DIN 976-1	M10	3 m	20
630 3 012	DIN 976-1	M12	1 m	20
630 3 212	DIN 976-1	M12	2 m	15
630 3 312	DIN 976-1	M12	3 m	15
630 3 014	DIN 976-1	M14	1 m	10
630 3 016	DIN 976-1	M16	1 m	10
630 3 216	DIN 976-1	M16	2 m	10
630 3 316	DIN 976-1	M16	3 m	1
630 3 018	DIN 976-1	M18	1 m	10
630 3 020	DIN 976-1	M20	1 m	5
630 3 024	DIN 976-1	M24	1 m	5



Threaded Rod

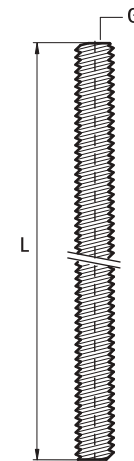


Features and Benefits

- material: steel
- zinc plated

Part No.	G	L
DMC3 3 006	M6	2 m.
DMC3 3 008	M8	2 m.
DMC3 3 010	M10	2 m.
DMC3 3 012	M12	2 m.
DMC3 3 016	M16	2 m.
DMC3 3 018	M18	2 m.
DMC3 3 020	M20	2 m.
DMC3 3 022	M22	2 m.
DMC3 3 024	M24	2 m.
DMC3 3 030	M30	2 m.

Hot Dip Galvanized and Stainless Steel option available on request.



Hexagonal Coupling Nut



Features and Benefits

- to connect 2 male threaded components
- material: steel
- zinc plated

Part No.	G	L
DM C33 7 006	M6	22 mm
DM C33 7 008	M8	22 mm
DM C33 7 010	M10	44 mm
DM C33 7 012	M12	44 mm
DM C33 7 016	M16	53 mm
DM C33 7 018	M18	56 mm
DM C33 7 022	M22	65 mm
DM C33 7 024	M24	65 mm

Subject to modifications

Hot Dip Galvanized and Stainless Steel option available on request.

